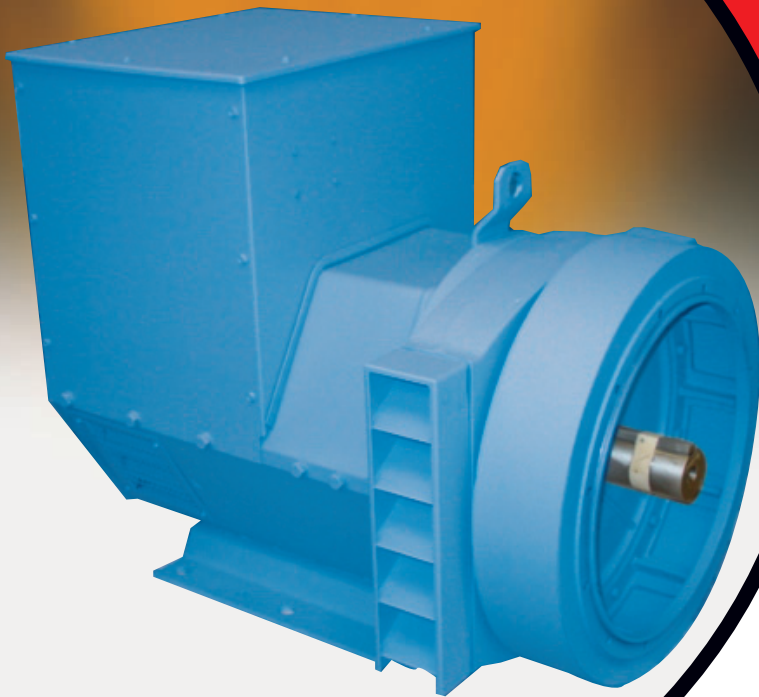


product profile

UCM224 RANGE

Marine / Offshore Applications



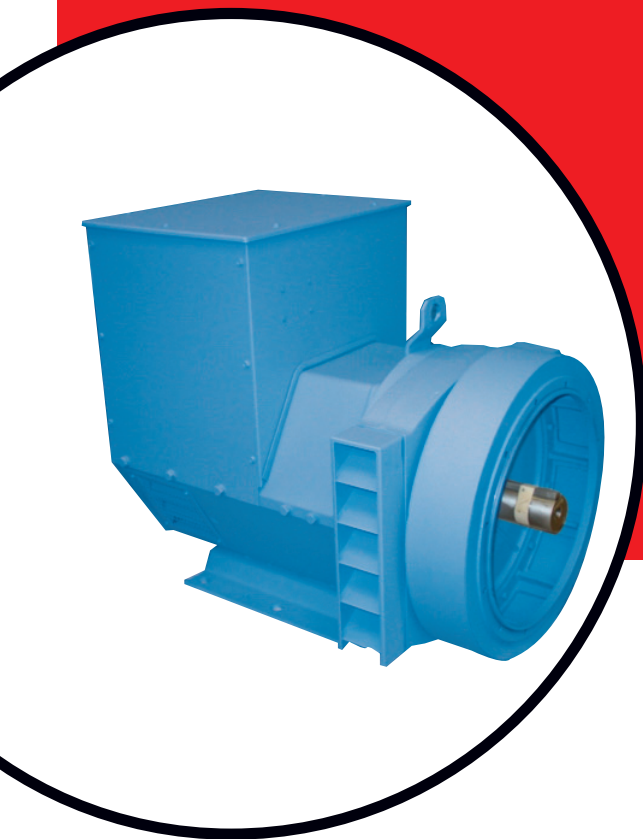
FEATURES:

- 2/3 pitch windings avoid excessive neutral currents
- Single or two bearing construction with dynamically balanced rotor and sealed-for-life bearings
- Easy access for installation and maintenance
- 12 wire reconnectable stator/terminal arrangement
- Built to conform with all leading marine standards
- PMG with MX341 AVR 1% Reg.
- IP23 as standard

OPTIONS & ACCESSORIES:

- Anti Condensation Heaters
- Air Filters
- Temperature Indication RTD's
- Winding Protection Thermistors
- Quadrature Droop Kit for Parallel Operation
- MX321 (PMG) with 3 Phase Sensing and improved Regulation 0.5%
- Power Factor Controller
- Diode Failure Unit
- Excitation Loss Module
- Manual Voltage Regulator

STAMFORD



product profile

UCM224 RANGE
Marine / Offshore Applications

50Hz		Cont. B - 70/50°C				Cont. F - 90/50°C				Cont. H - 110/50°C			
	Star (V)	380	400	415	440	380	400	415	440	380	400	415	440
	Delta (V)	220	230	240	254	220	230	240	254	220	230	240	254
	Series Delta (V)	220	230	240	254	220	230	240	254	220	230	240	254
UCM224C	kVA	31.0	31.0	31.0	22.5	35.0	35.0	35.0	25.5	38.0	38.0	38.0	26.8
	kW	24.8	24.8	24.8	18.0	28.0	28.0	28.0	20.4	30.4	30.4	30.4	21.4
UCM224D	kVA	37.5	37.5	37.5	27.3	40.0	40.0	40.0	29.7	44.0	44.0	44.0	32.7
	kW	30.0	30.0	30.0	21.8	32.0	32.0	32.0	23.8	35.2	35.2	35.2	26.2
UCM224E	kVA	42.0	42.0	42.0	32.6	47.5	47.5	47.5	36.9	52.3	52.3	52.3	40.2
	kW	33.6	33.6	33.6	26.1	38.0	38.0	38.0	29.5	41.8	41.8	41.8	32.2
UCM224F	kVA	50.0	50.0	50.0	39.3	57.5	57.5	57.5	45.2	63.3	63.3	63.3	49.1
	kW	40.0	40.0	40.0	31.4	46.0	46.0	46.0	36.2	50.6	50.6	50.6	39.3
UCM224G	kVA	60.0	60.0	60.0	52.2	65.0	65.0	65.0	57.0	71.5	71.5	71.5	62.7
	kW	48.0	48.0	48.0	41.8	52.0	52.0	52.0	45.6	57.2	57.2	57.2	50.2

Due to our policy of continuous improvement, details in this leaflet which were correct at time of printing may now be due for amendment. Information included must therefore not be regarded as binding

60Hz		Cont. B - 70/50°C				Cont. F - 90/50°C				Cont. H - 110/50°C			
	Star (V)	416	440	460	480	416	440	460	480	416	440	460	480
	Delta (V)	240	254	266	277	240	254	266	277	240	254	266	277
	Delta (V)	240	254	266	277	240	254	266	277	240	254	266	277
UCM224C	kVA	35.0	36.3	37.5	37.5	39.4	41.9	43.1	43.1	43.8	44.7	44.7	46.5
	kW	28.0	29.0	30.0	30.0	31.5	33.5	34.5	34.5	35.0	35.8	35.8	37.2
UCM224D	kVA	42.0	43.8	46.3	46.3	47.5	50.0	51.3	51.3	51.0	53.1	54.3	56.3
	kW	33.6	35.0	37.0	37.0	38.0	40.0	41.0	41.0	40.8	42.5	43.4	45.0
UCM224E	kVA	47.5	50.0	52.5	52.5	53.8	56.3	58.8	58.8	60.0	63.0	63.0	66.0
	kW	38.0	40.0	42.0	42.0	43.0	45.0	47.0	47.0	48.0	50.4	50.4	52.8
UCM224F	kVA	57.5	60.0	62.5	62.5	65.6	68.8	71.9	71.9	72.5	75.6	75.6	80.0
	kW	46.0	48.0	50.0	50.0	52.5	55.0	57.5	57.5	58.0	60.5	60.5	64.0
UCM224G	kVA	62.5	68.8	75.0	75.0	75.0	78.8	81.3	81.3	84.5	87.0	91.0	92.0
	kW	50.0	55.0	60.0	60.0	60.0	63.0	65.0	65.0	67.6	69.6	72.8	73.6

PM UCM-224 04.04_01_GB