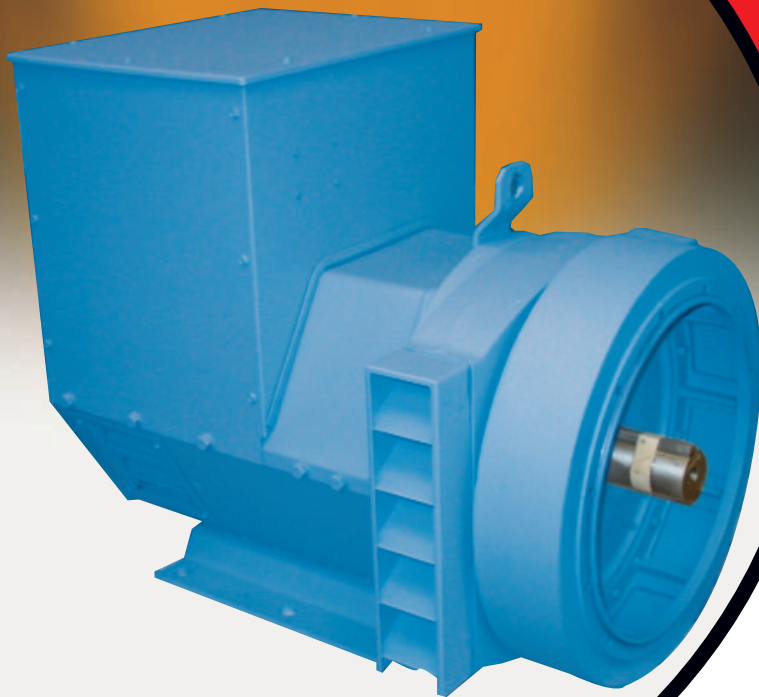


product profile

UCM274 RANGE

Marine / Offshore Applications



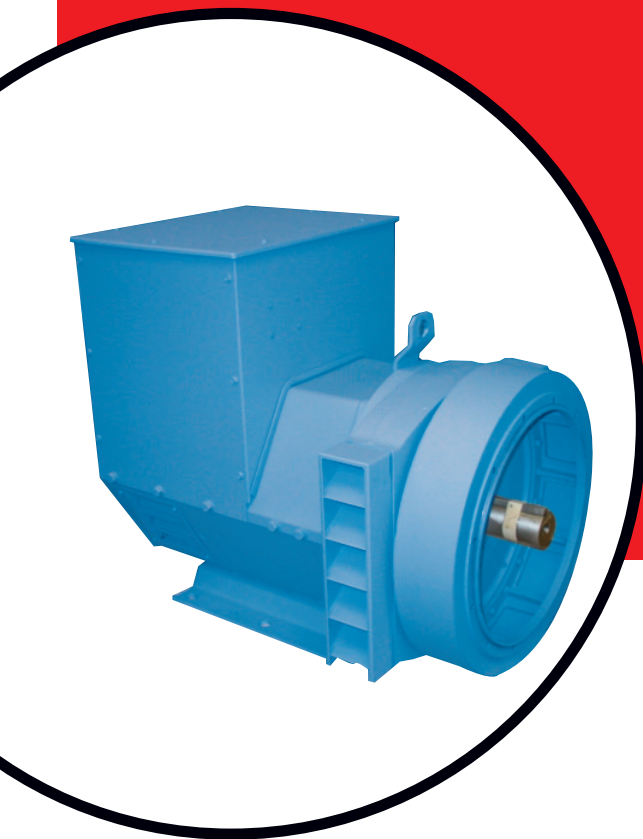
FEATURES:

- PMG with MX341 AVR 1% Regulation
- 2/3 pitch windings avoid excessive neutral currents
- Single or two bearing construction with dynamically balanced rotor and sealed-for-life bearings
- Easy access for installation and maintenance
- 12 wire reconnectable stator/terminal arrangement
- Built to conform with all leading industrial and marine standards
- IP23 as standard

OPTIONS & ACCESSORIES:

- Temperature Indication RTD's
- Winding Protection Thermistors
- Anti Condensation Heaters
- Air Filters
- Quadrature Droop Kit for Parallel Operation
- MX321 (PMG) with 3 Phase Sensing and improved Regulation 0.5%
- Power Factor Controller
- Diode Failure Unit
- Excitation Loss Module
- Manual Voltage Regulator

STAMFORD



product profile

UCM274/RANGE
Marine / Offshore Applications

50Hz		Cont. B - 70/50°C				Cont. F - 90/50°C				Cont. H - 110/50°C			
	Star (V)	380	400	415	440	380	400	415	440	380	400	415	440
	Delta (V)	220	230	240	254	220	230	240	254	220	230	240	254
	Series Delta (V)	220	230	240	254	220	230	240	254	220	230	240	254
UCM274C	kVA	67.5	67.5	67.5	n/a	77.5	77.5	77.5	n/a	81.5	81.5	81.5	n/a
	kW	54.0	54.0	54.0	n/a	62.0	62.0	62.0	n/a	65.2	65.2	65.2	n/a
UCM274D	kVA	81.3	81.3	81.3	n/a	87.5	87.5	87.5	n/a	97.0	97.0	97.0	n/a
	kW	65.0	65.0	65.0	n/a	70.0	70.0	70.0	n/a	77.6	77.6	77.6	n/a
UCM274E	kVA	100.0	100.0	100.0	n/a	112.5	112.5	112.5	n/a	120.0	120.0	120.0	n/a
	kW	80.0	80.0	80.0	n/a	90.0	90.0	90.0	n/a	96.0	96.0	96.0	n/a
UCM274F	kVA	112.5	112.5	112.5	n/a	135.0	135.0	135.0	n/a	140.0	140.0	140.0	n/a
	kW	90.0	90.0	90.0	n/a	108.0	108.0	108.0	n/a	112.0	112.0	112.0	n/a
UCM274G	kVA	128.6	128.6	128.6	n/a	149.0	149.0	149.0	n/a	159.0	159.0	159.0	n/a
	kW	102.9	102.9	102.9	n/a	119.2	119.2	119.2	n/a	127.2	127.2	127.2	n/a
UCM274H	kVA	143.8	143.8	143.8	n/a	170.0	170.0	170.0	n/a	175.0	175.0	175.0	n/a
	kW	115.0	115.0	115.0	n/a	136.0	136.0	136.0	n/a	140.0	140.0	140.0	n/a

Due to our policy of continuous improvement, details in this leaflet which were correct at time of printing may now be due for amendment. Information included must therefore not be regarded as binding

60Hz		Cont. B - 70/50°C				Cont. F - 90/50°C				Cont. H - 110/50°C			
	Star (V)	416	440	460	480	416	440	460	480	416	440	460	480
	Delta (V)	240	254	266	277	240	254	266	277	240	254	266	277
	Delta (V)	240	254	266	277	240	254	266	277	240	254	266	277
UCM274C	kVA	75.0	77.5	80.0	80.0	90.0	92.5	97.5	97.5	93.8	102.5	102.5	108.8
	kW	60.0	62.0	64.0	64.0	72.0	74.0	78.0	78.0	75.0	82.0	82.0	87.0
UCM274D	kVA	87.5	90.0	92.5	92.5	107.5	110.0	112.5	112.5	115.0	117.5	120.0	125.0
	kW	70.0	72.0	74.0	74.0	86.0	88.0	90.0	90.0	92.0	94.0	96.0	100.0
UCM274E	kVA	110.0	112.5	118.8	118.8	125.0	131.3	137.5	137.5	135.0	137.5	140.0	144.0
	kW	88.0	90.0	95.0	95.0	100.0	105.0	110.0	110.0	108.0	110.0	112.0	115.2
UCM274F	kVA	131.3	137.5	143.8	143.8	150.0	156.0	163.0	163.0	156.3	162.5	167.5	168.8
	kW	105.0	110.0	115.0	115.0	120.0	124.8	130.4	130.4	125.0	130.0	134.0	135.0
UCM274G	kVA	151.6	162.0	162.0	162.0	170.7	186.0	186.0	186.0	186.4	192.8	192.8	205.7
	kW	121.3	129.6	129.6	129.6	136.6	148.8	148.8	148.8	149.1	154.2	154.2	164.6
UCM274H	kVA	175.0	187.5	200.0	200.0	200.0	212.5	218.8	218.8	212.5	218.8	221.3	225.0
	kW	140.0	150.0	160.0	160.0	160.0	170.0	175.0	175.0	170.0	175.0	177.0	180.0

PM UCM-274 04.04_01_GB