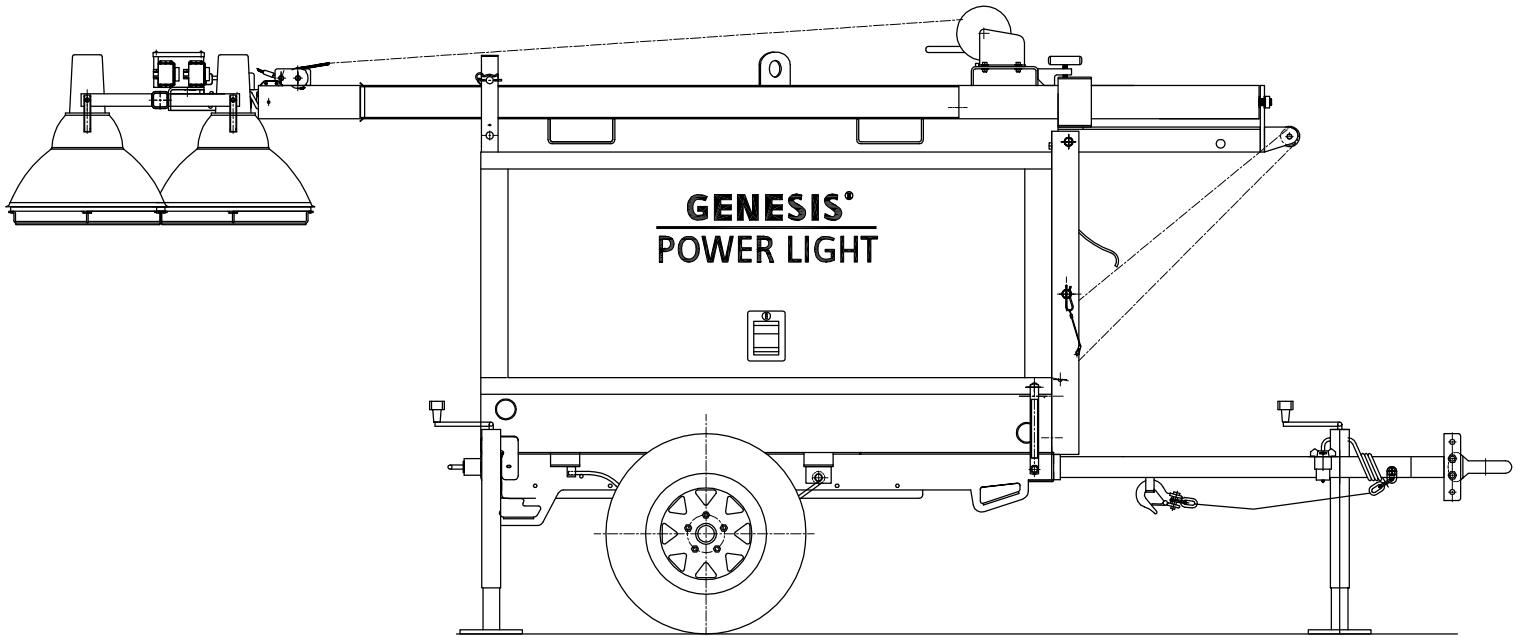


GENESIS®

POWER LIGHT



PARTS MANUAL

GT4000



www.frontierpower.com

Delta BC Canada	604-946-5531
Edmonton AB Canada	780-455-2260
Calgary AB Canada	403-720-3735

Thank you for purchasing Frontier Power Product's Genesis Power Light. We are constantly searching for new products and systems to offer a high degree of quality and reliability in our equipment. This may cause the manual to reflect changes not incorporated in your unit. Frontier Service Centers will have complete information regarding all units.

Genesis Power Light parts are available at any of the Frontier Power Products Ltd branches located in Delta BC, Edmonton or Calgary AB

When ordering parts please have the following information available to ensure proper identification of the parts required.

Serial/VIN Number _____
Located on Decal Left Side of Exterior

Engine Serial Number _____
Located on Top of Valve Cover

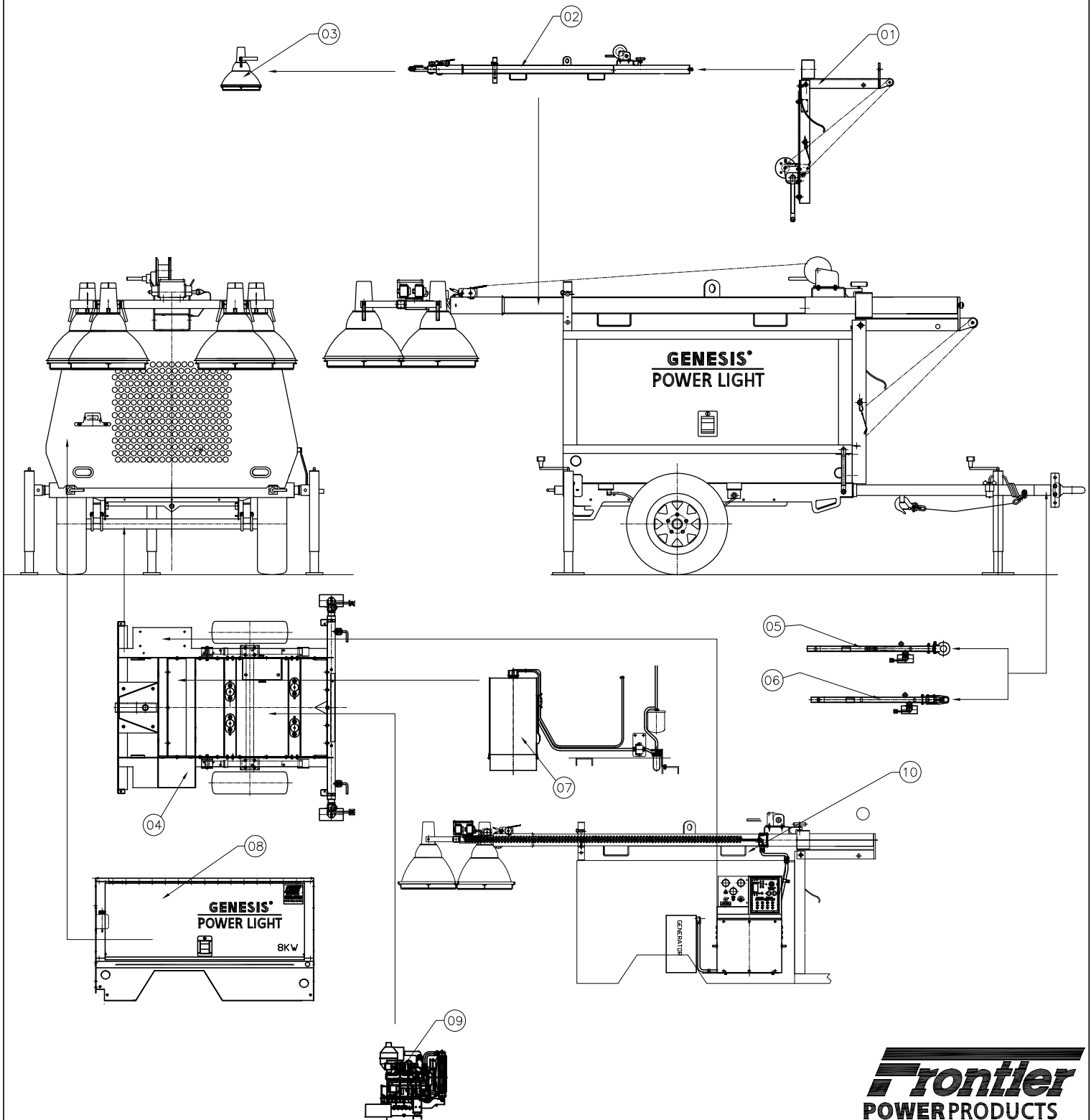
Generator Serial Number _____
Located on ID Plate on Left Side of Generator

All units are shipped with a Kubota Diesel Engine Operators Manual. Please become familiar with all Safety and Maintenance procedures outlined in the manual. Your parts dealer will identify all of your engine parts requirements from the serial number.

All units are shipped with a Stamford Generator Service & Maintenance Manual. Please become familiar with all Safety and Maintenance procedures outlined in the manual. Your parts dealer will identify all of your generator parts requirements from the serial number.

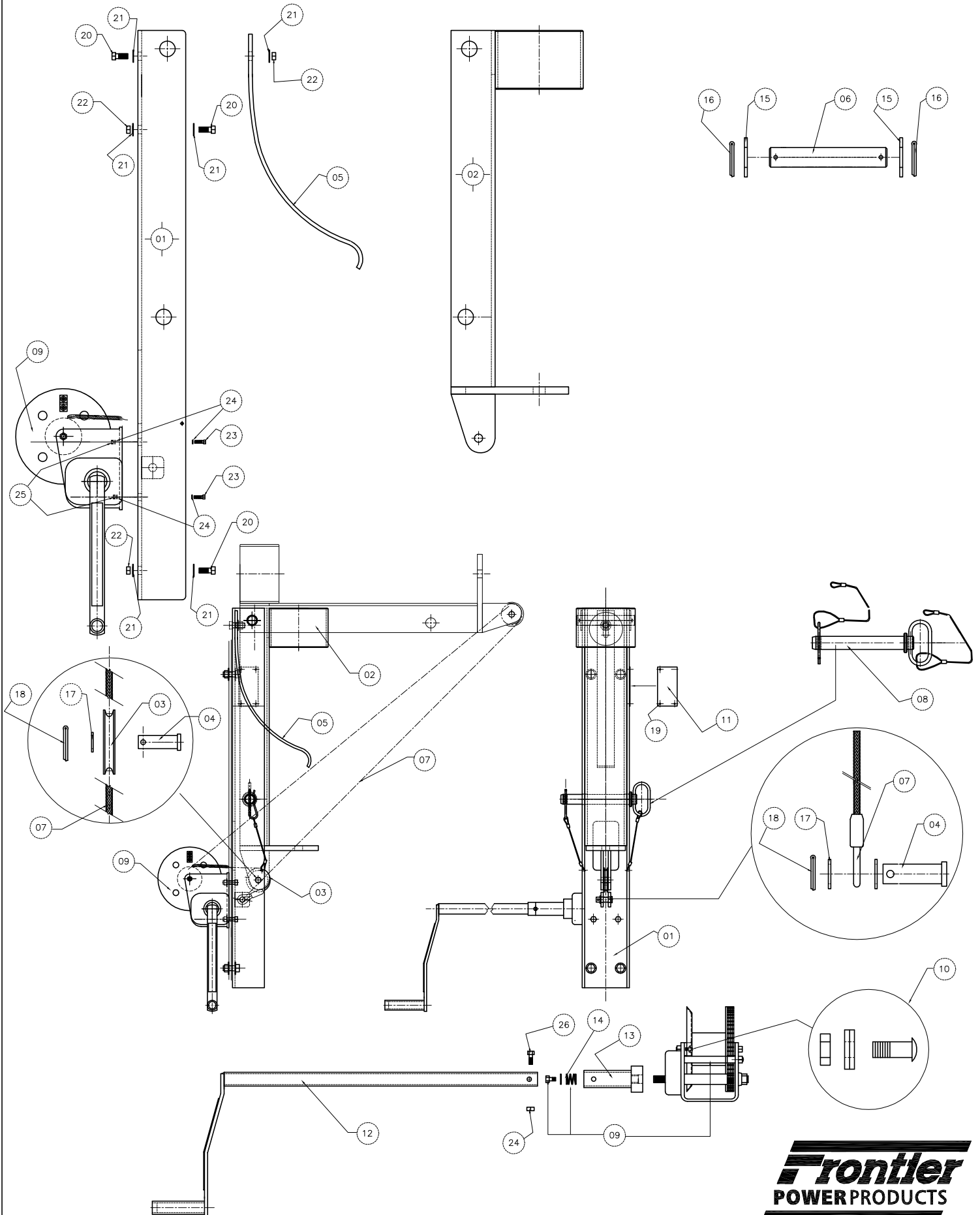
Please follow all Operating and Safety Decals supplied on the unit.

GT4000-ASSEMBLY

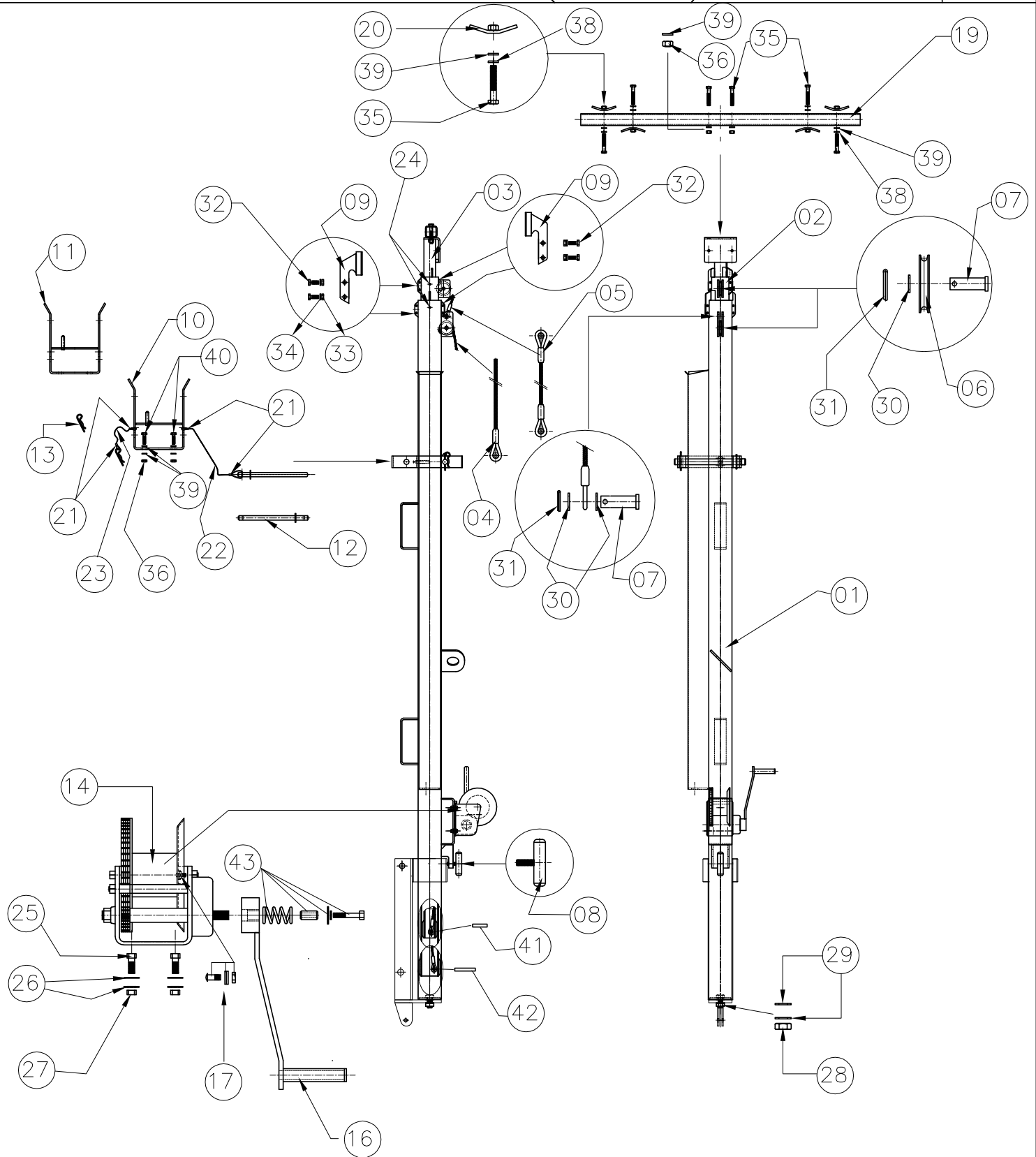


GT4000–ASSEMBLY

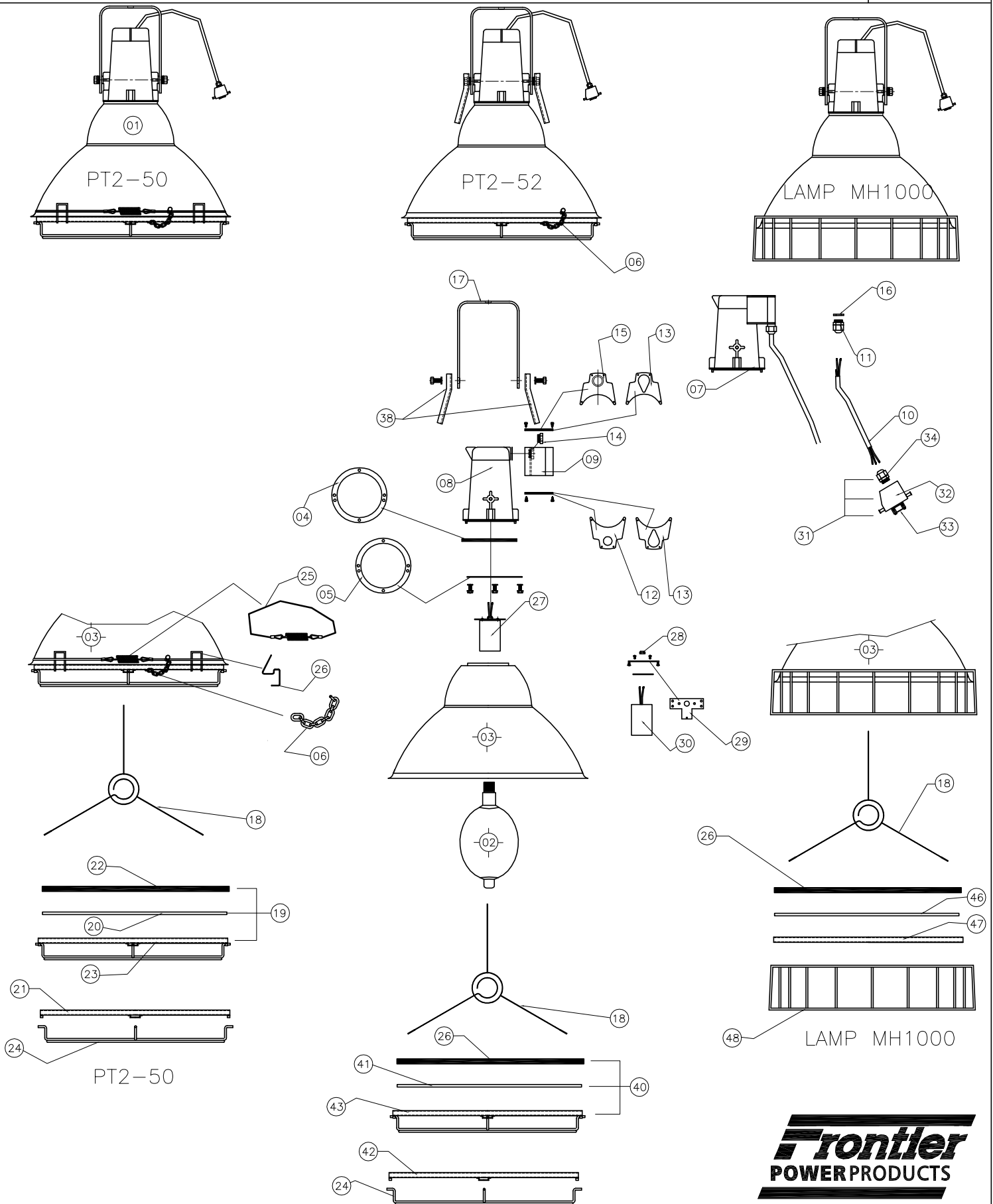
SECTION	PART NO.	DESCRIPTION
01	G1–11	TOWER PEDESTAL
02	G2–10	MAST ASSEMBLY
03	PT2–52	LIGHT ASSEMBLY
04	G4–01	FRAME ASSEMBLY
05	G4–10	HITCH ASSEMBLY
06	G4–12	HITCH ASSEMBLY
07	G5–10	PLASTIC TANK –ASSEMBLY
08	G6–10	CANOPY SHELL ASSEMBLY
09	G7–10	ENGINE
10	G8–01	ELECTRICAL



MK. NO.	PART NO.	DESCRIPTION
01	G1-11-01	PEDESTAL POST
02	G1-10-02	PEDESTAL ARM
03	PT2-10-19	CABLE SHEAVE
04	PT2-10-08	PIN,CLEVIS 1/2X1 1/2
05	G1-11-05	KICKER SPRING
06	G1-10-07	PIN 1X 6
07	G1-10-16	MAST PIVOT CABLE
08	G1-10-09	HITCH PIN(ASSEMBLY)
09	PT1-10-05	WINCH(no handle)
10	PT1-10-05-01	CABLE KEEPER KIT
11	PT1-10-10	CSA PLATE
12	PT1-60	WINCH EXTENSION 1(PAINT)
13	PT1-61	WINCH EXTENSION 2(PAINT)
14	PT1-10-05-02	WINCH HANDLE KIT
15		1" GR.5 FLAT WASHER
16		3/16" COTTER PIN X 1 1/2"
17		ø 7/16" GR.8 FLAT WASHER
18		ø 1/8" COTTER PIN X 1"
19		ø1/8" ALUMINUM POP RIVET
20		ø1/2" GR.5 BOLT X 1 1/4"
21		ø1/2" FLAT WASHER
22		ø1/2" GR.5 NYLON LOCK NUT
23		ø5/16" GR.5 BOLT X 1 1/4"
24		ø5/16" FLAT WASHER
25		ø5/16" GR.5 NYLON LOCK NUT
26		ø5/16" GR.5 BOLT X 2"



MK. NO.	PART NO.	DESCRIPTION
01	G2-10-04	MAST LOWER BOOM
02	G2-10-05	MAST MIDDLE BOOM
03	G2-10-06	MAST UPPER BOOM
04	G2-10-17	BOOM EXTENSION CABLE(ONE EYE)
05	G2-10-18	BOOM EXTENSION CABLE(DOUBLE EYE)
06	PT2-10-19	CABLE SHEAVE
07	PT2-10-08	PIN-1/2 CLEVIS
08	G2-10-03	T HANDLE BOOM BASE
09	G2-10-11	EXTENTION GUIDE
10	G2-10-30	MAST REAR SUPPORT-ASSEMBLY
11	G2-10-31	MAST REAR SUPPORT
12	G2-10-32	REAR SUPPORT PIN
13	PT2-10-30-05	3/16 HAIR PIN
14	PT1-10-05	WINCH(NO HANDLE)
16	PT1-62	HANDLE 9"
17	PT1-10-05-01	CABLE KEEPER KIT
19	G2-10-07-02	LIGHT BAR
20	PT2-10-08	LIGHT BAR WING NUT
21		ø1/16"CABLE CRIMP
22		ø 1/16" A/C CABLE X 16"
23		ø1/16" A/C CABLE X 10"
24		ø5/16" S.S. BUTTON CAP SOCKET SCREW X 3/8"
25		ø5/16" GR.5 BOLT X 3/4"
26		ø5/16" FLAT WASHER
27		ø5/16" GR.5 NYLON LOCK NUT
28		ø3/4" GR.5 NYLON LOCK NUT
29		ø3/4" FLAT WASHER
30		ø7/16" GR.8 FLAT WASHER
31		ø1/8" COTTER PIN X 3/4"
32		ø1/4" GR.5 BOLT X 3/4"
33		ø1/4" GR.5 NYLON LOCK NUT
34		ø1/4" FLAT WASHER
35		ø1/2" GR.5 BOLT X 3"
36		ø1/2" GR.5 NYLON LOCK NUT
37		ø1/2" GR.5 LOCK WASHER
39		ø1/2" GR.5 FLAT WASHER
40		ø1/2" GR.5 BOLT X 1 1/4"
41	PT2-10-11-01	PIN CABLE 1/2X 2 3/8
42	PT2-10-10-01	PIN CABLE 1/2X 3 3/8
43	PT1-10-05-02	HANDLE KIT



PT2-50

MK. NO.	PART NO.	DESCRIPTION
01	PT2-50	LIGHT ASSEMBLY
02	PT2-50-01	BULB
03	PT2-50-02	SPUN REFLECTOR
04	PT2-50-02-02	RUBBER REFLECTOR GASKET
05	PT2-50-02-03	REFLECTOR GASKET PLATE
06	PT2-50-02-04	CHAIN-LENS RETAINER
07	PT2-50-03	CASE HOLDER, JC BOX, CORD
08	PT2-50-03-01	CASE HOLDER
09	PT2-50-03-02	JC BOX
10	PT2-50-03-03	CORD
11	PT2-50-03-04	CABLE STRAIN RELIEF 1/2" NPT
12	PT2-50-03-05	BOTTOM JC BOX PLATE
13	PT2-50-03-06	JC BOX GASKET
14	PT2-50-03-07	BUSHING
15	PT2-50-03-08	TOP JC BOX PLATE
16	PT2-50-03-09	1/2"NPT LOCK NUT
17	PT2-50-04	YOKE
18	PT2-50-05	SPIDER
* 19	PT2-50-06	GLASS/RING/RUBBER
* 20	PT2-50-06-01	GLASS
* 21	PT2-50-06-02	RING
22	PT2-50-06-03	RUBBER
* 23	PT2-50-07	GUARD RING/LENS/RUBBER
24	PT2-50-07-01	GUARD
* 25	PT2-50-07-04	CABLE CLIP RETAINER
* 26	PT2-50-07-03	Z-CLIP
27	PT2-50-08	LAMPHOLDER(ASSEMBLY)
28	PT2-50-08-01	CONNECTOR
29	PT2-50-08-02	PLATE
30	PT2-50-08-03	LAMPHOLDER
31	PT2-50-09	PLUG
32	PT2-50-09-01	BODY
33	PT8-95-10	INSERT M
34	PT8-95-40	PLASTIC GLAND

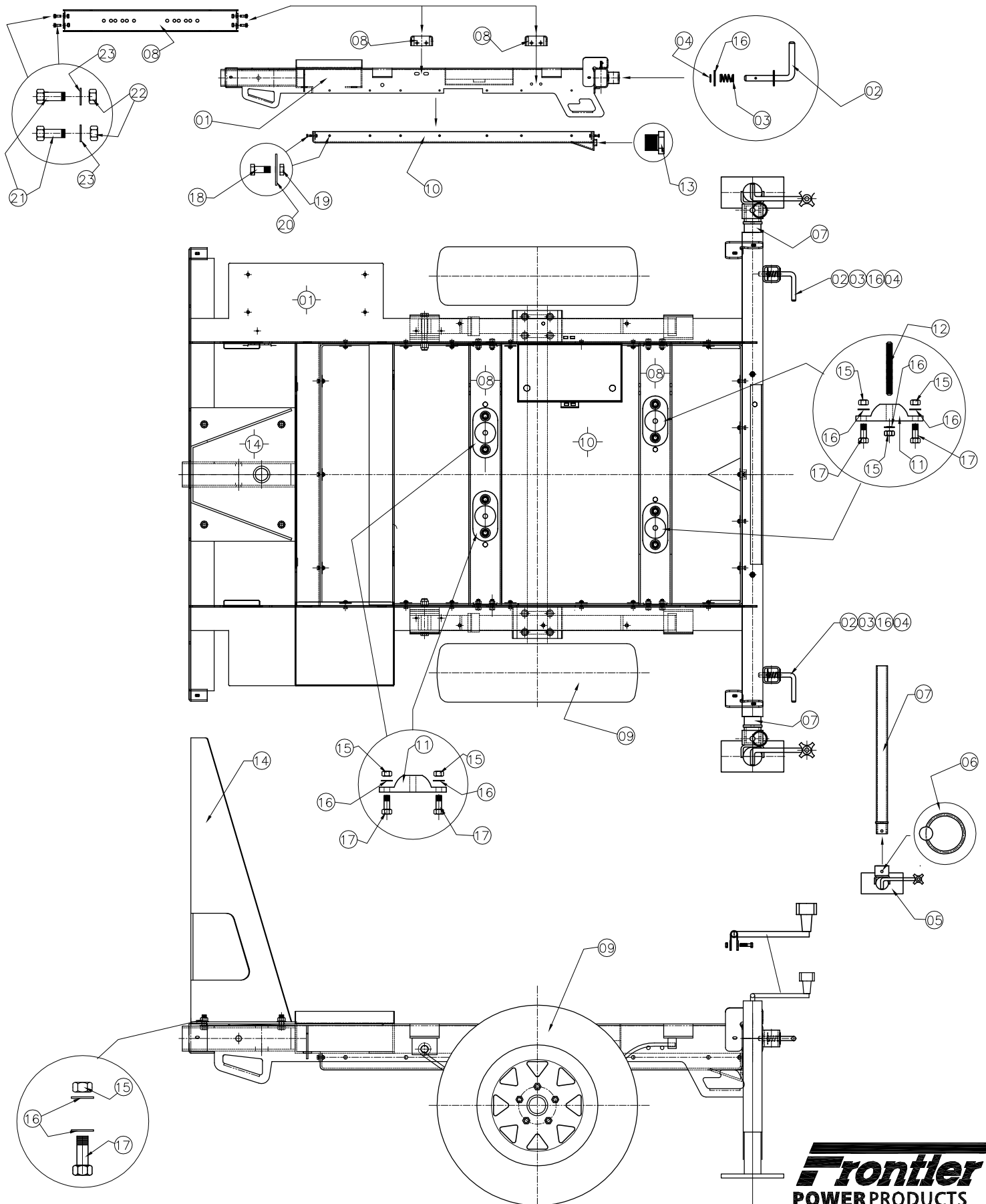
PT2-52

* 38	PT2-52-10	TIGHTNER-LIGHT ADJUSTMENT
* 39	PT2-52	LIGHT ASSEMBLY
* 40	PT2-52-06	GLASS/RING/RUBBER
* 41	PT2-52-06-01	GLASS
* 42	PT2-52-06-02	RING
* 43	PT2-52-07	RING/GUARD

LAMP MH1000

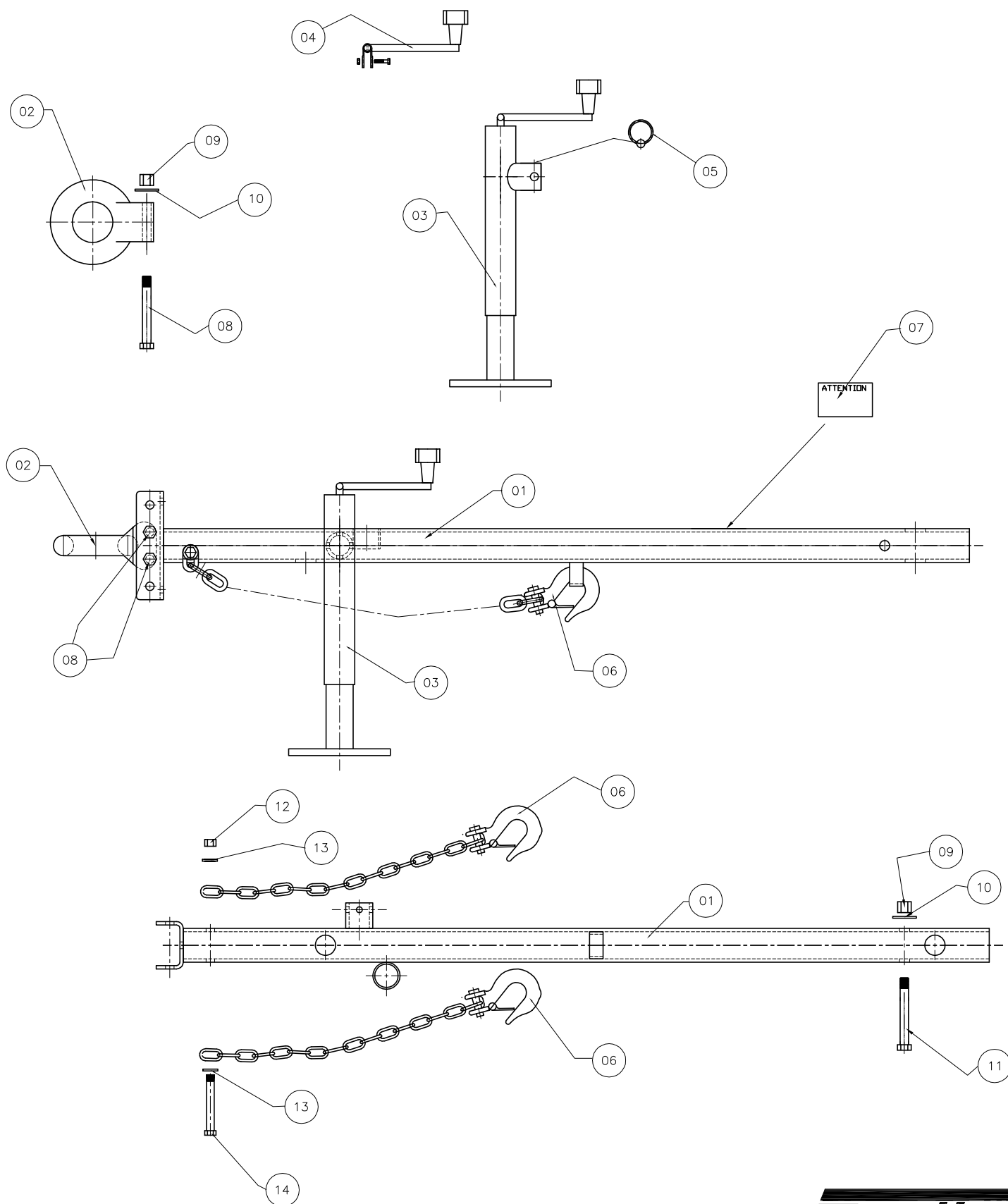
* 44	MH1000	LIGHT ASSEMBLY
* 46	MH1000-06-01	GLASS
* 47	MH1000-06-02	RING
* 48	MH1000-07-01	GUARD

NOTE: PARTS WITHOUT * ARE SAME FOR ALL TYPE OF LIGHTS

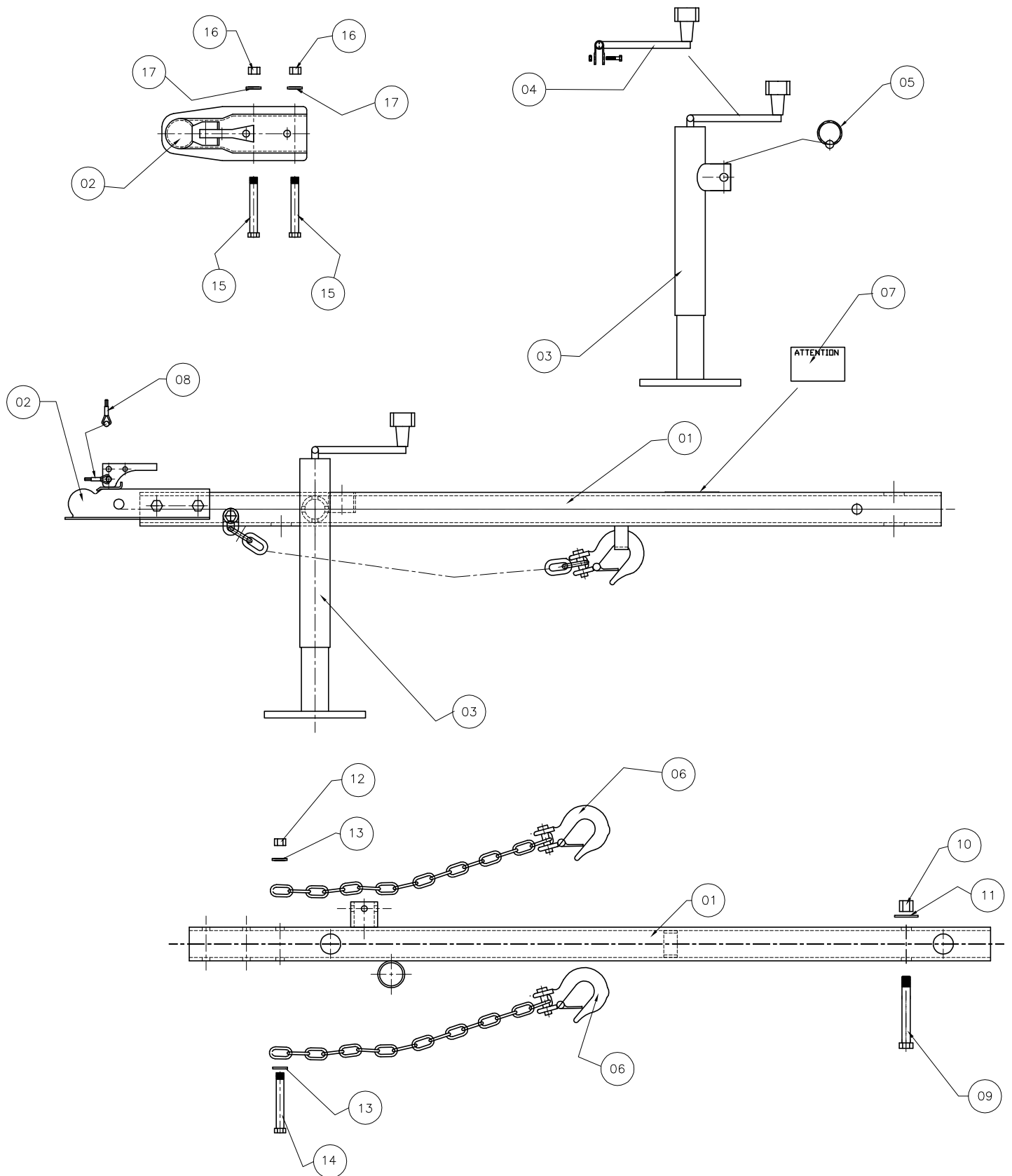


MK. NO.	PART NO.	DESCRIPTION
01	G4-01-20	FRAME ASSEMBLY(PAINT)
02	PT4-40	EXTENSION ARM LOCK PIN
03	PT4-41	COMPRESSION SPRING
04	PT4-43	COTTER PIN
05	G4-10-29	JACK TOPWIND 5K BLACK
06	G4-10-29-01	JACK PIN REPLACEMENT
07	G4-45	JACK EXTENSION ASSEMBLY(GALVANIZE)
08	G4-10-25	FRAME CROSS MEMBER(PAINTED)
09	G4-01-81	AXLE,WEELS,SPRINGS-ASSEMBLY
10	G4-30	SPILL CATCH PAN
11	G4-01-66	NEOP. MOUNT (YELLOW DOT)
12	PT7-10-30	CRASH STOP
13	G4-30-05	HEXAGON HEAD PLUG
14	G4-01-83	PEDISTAL SUPPORT(PAINTED)
15		ø1/2" GR.5 NYLON LOCK NUT
16		ø1/2" GR.5 FLAT WASHER
17		ø1/2" GR.5 BOLT X 1 1/4"
18		ø1/4" GR.5 BOLT X 1"
19		ø1/4" GR.5 NYLON LOCK NUT
20		ø1/4" GR.5 FLAT WASHER W
21		ø3/8" GR.5 BOLT X 1"
22		ø3/8" GR.5 NYLON LOCK NUT
23		ø3/8" GR.5 FLAT WASHER

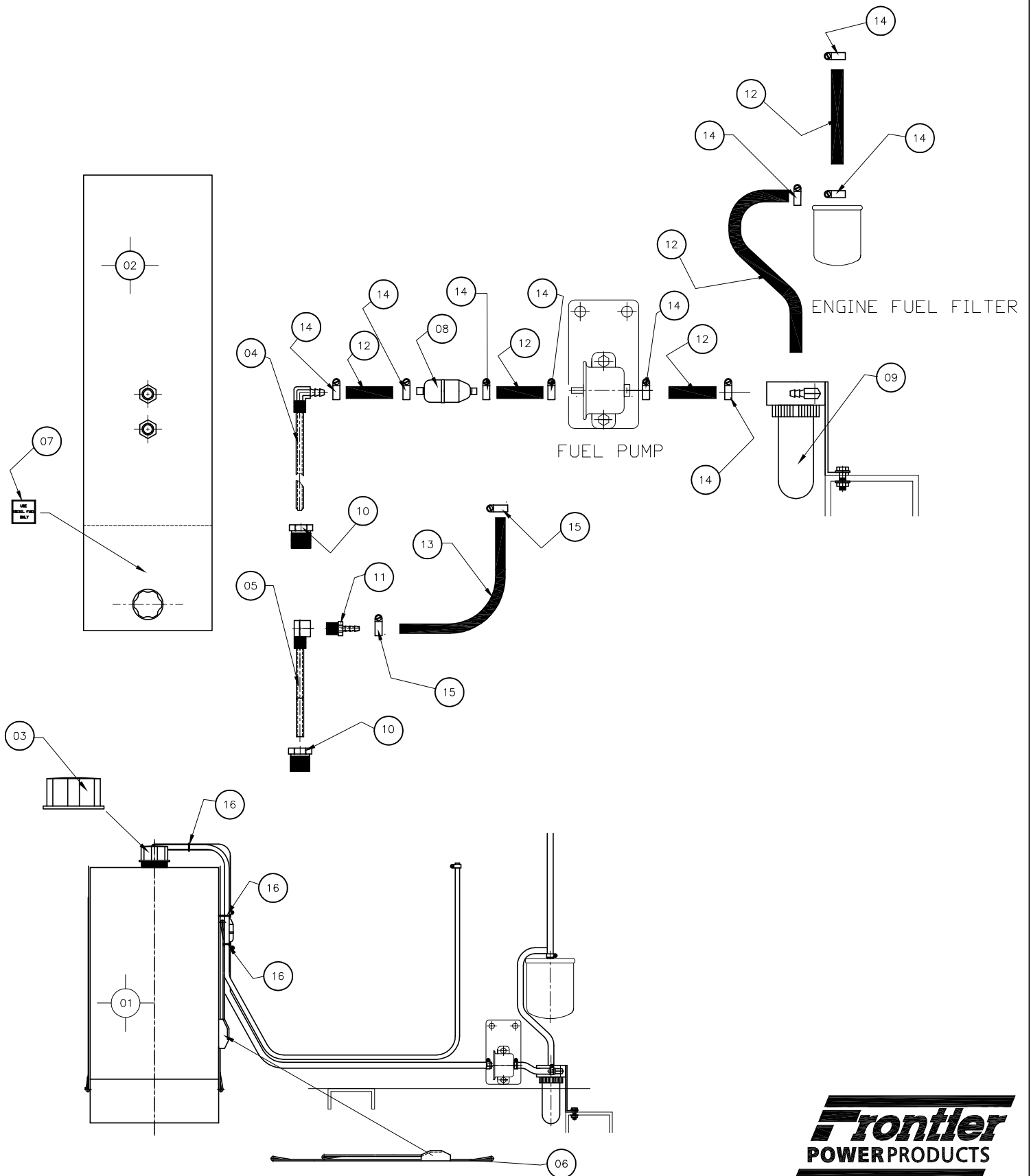
MK. NO.	PART NO.	DESCRIPTION
01	G4—01—81	AXLE, WHEELS, SPRINGS—ASSEMBLY
02	G4—01—81—01	AXLE (ASSEMBLY), 35545ISTOS4725X3525, 3500#
03	PT4—01—81—02	1/2" CONE WHEEL NUT
04	PT4—01—81—08	HUB ONLY—4.5" BOLT CIRCLE
05	G4—01—81—32	U—BOLT KIT
06	G4—01—81—33	SLIPPER SPRINGS 1500#—9/16"
07	G4—01—81—15	13X4.5 SPOKE WHEEL C/W TIRE
08	G4—01—81—16	TIRE
09	G4—01—81—17	WHEEL, 3.19 PILOT DIA.
10	PT4—01—81—10	OUTER RACE
11	PT4—01—81—11	OUTER BEARING
12	PT4—01—81—07	INNER RACE
13	PT4—01—81—05	INNER BEARING
14	PT4—01—81—06	GREASE SEAL
15	G4—01—81—02	GREASE CAP
16	G4—01—81—03	GREASE CAP PLUG
17	G4—01—81—21	SPINDLE
18	G4—01—81—22	SPINDLE WASHER
19	G4—01—81—23	SPINDLE NUT
20	G4—01—81—24	COTTER KEY
21	PT4—01—81—09	WHEEL STUD
22		ø9/16" GR.8 BOLT X 4"
23		ø9/16" GR.8 NYLON LOCK NUT
24		ø9/16" STAR WASHER—INTERNAL



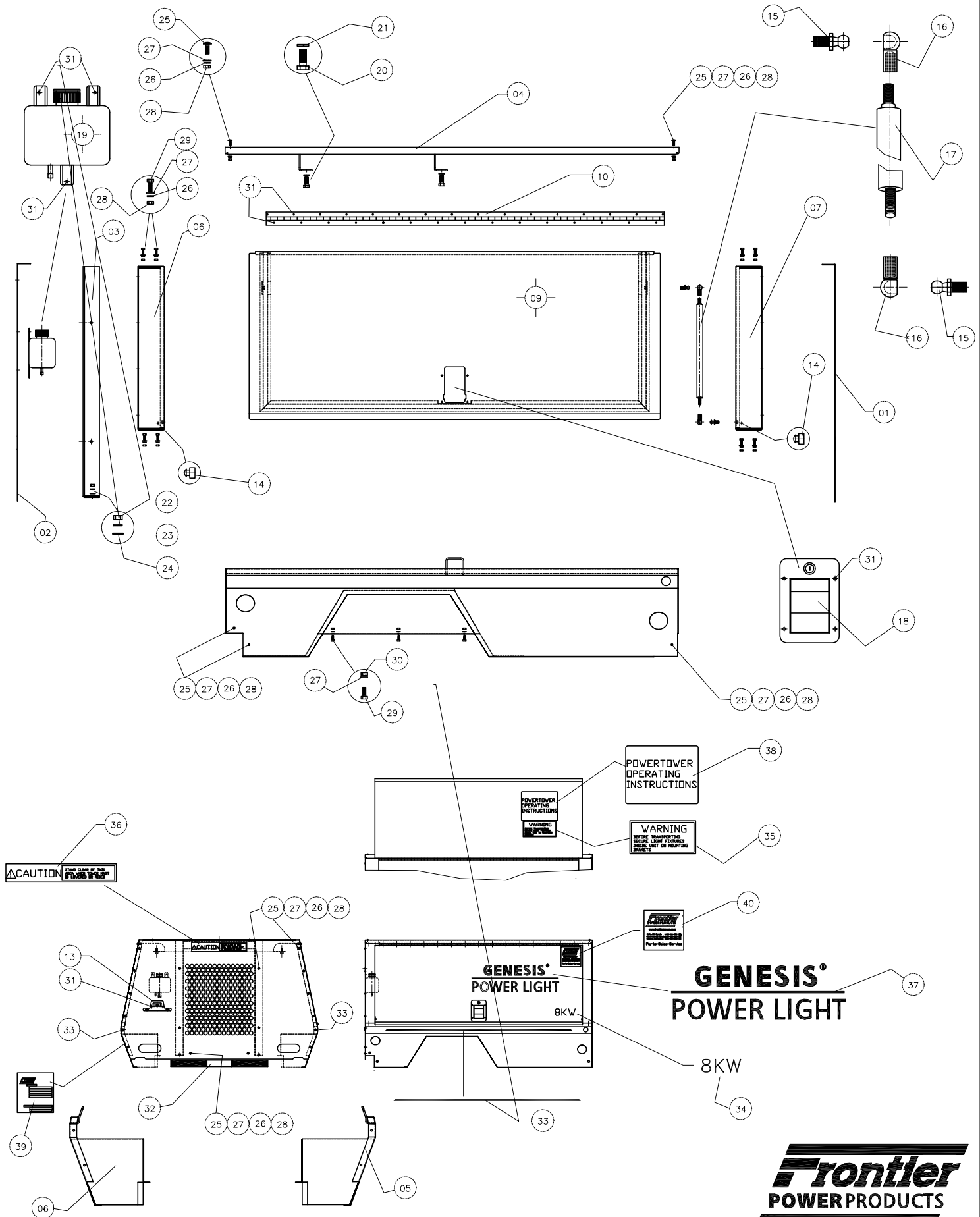
MK. No.	PART No.	DESCRIPTION
01	G4-10-01	HITCH (PAINTED)
02	G4-10-10	PINTLE EYE
03	G4-10-29	JACK TOPWIND 5K BLACK
04	PT4-10-29-01	JACK HANDLE REPLACEMENT
05	PT4-10-29-02	JACK PIN REPLACEMENT
06	G4-10-35	SAFETY CHAIN 5/16 X GRAB H.
07	PT4-10-30	DECAL -CAUTION TOWING TRAILER
08		5/8" GR.5 BOLT X 5"
09		5/8" NYLON LOCK NUT
10		5/8" GR.5 FLAT WASHER
11		5/8" GR.8 BOLT X 5"
12		9/16" NYLON LOCK NUT
13		9/16" GR.5 FLAT WASHER
14		9/16" GR.8 BOLT X 4 1/2"



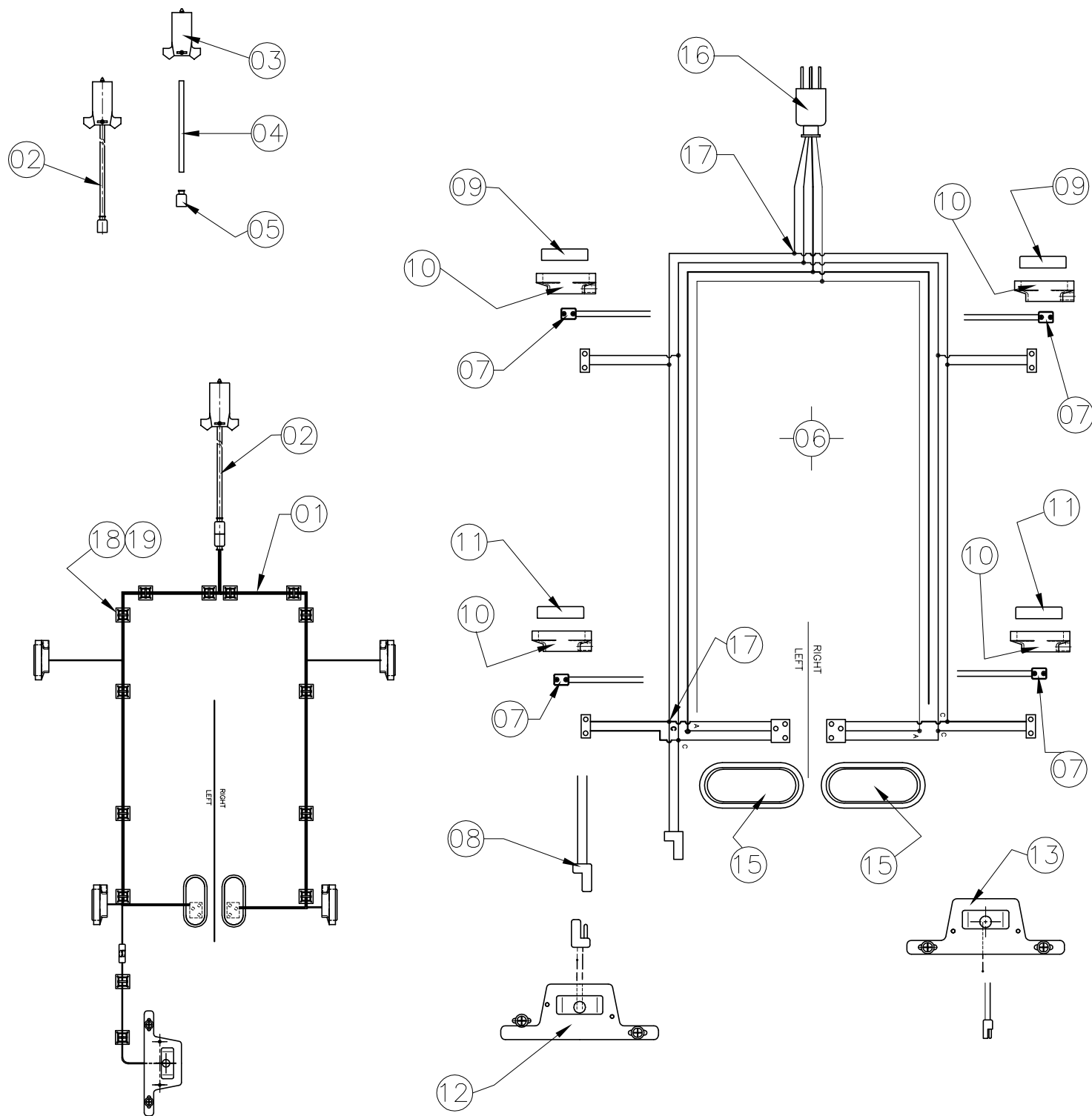
MK. No.	PART No.	DESCRIPTION
01	G4-12-01	HITCH (PAINTED)
02	G4-12-10	2" BALL COUPLER/2-1/2"CHANNEL
03	G4-10-29	JACK TOPWIND 5K BLACK
04	G4-10-29-01	JACK HANDLE REPLACEMENT
05	G4-10-29-02	JACK PIN REPLACEMENT
06	G4-10-35	SAFETY CHAIN 5/16 X GRAB H.
07	PT4-10-30	DECAL -CAUTION TOWING TRAILER
08	PT4-10-31	QUICK PIN 1/4X3/8
09		5/8" GR.8 BOLT X 5"
10		5/8" NYLON LOCK NUT
11		5/8" GR.5 FLAT WASHER
12		9/16" NYLON LOCK NUT
13		9/16" GR.8 FLAT WASHER
14		9/16" GR.5 BOLT X 4 1/2"
15		1/2" GR.5 BOLT X 4"
16		1/2" NYLON LOCK NUT
17		1/2" GR.5 FLAT WASHER



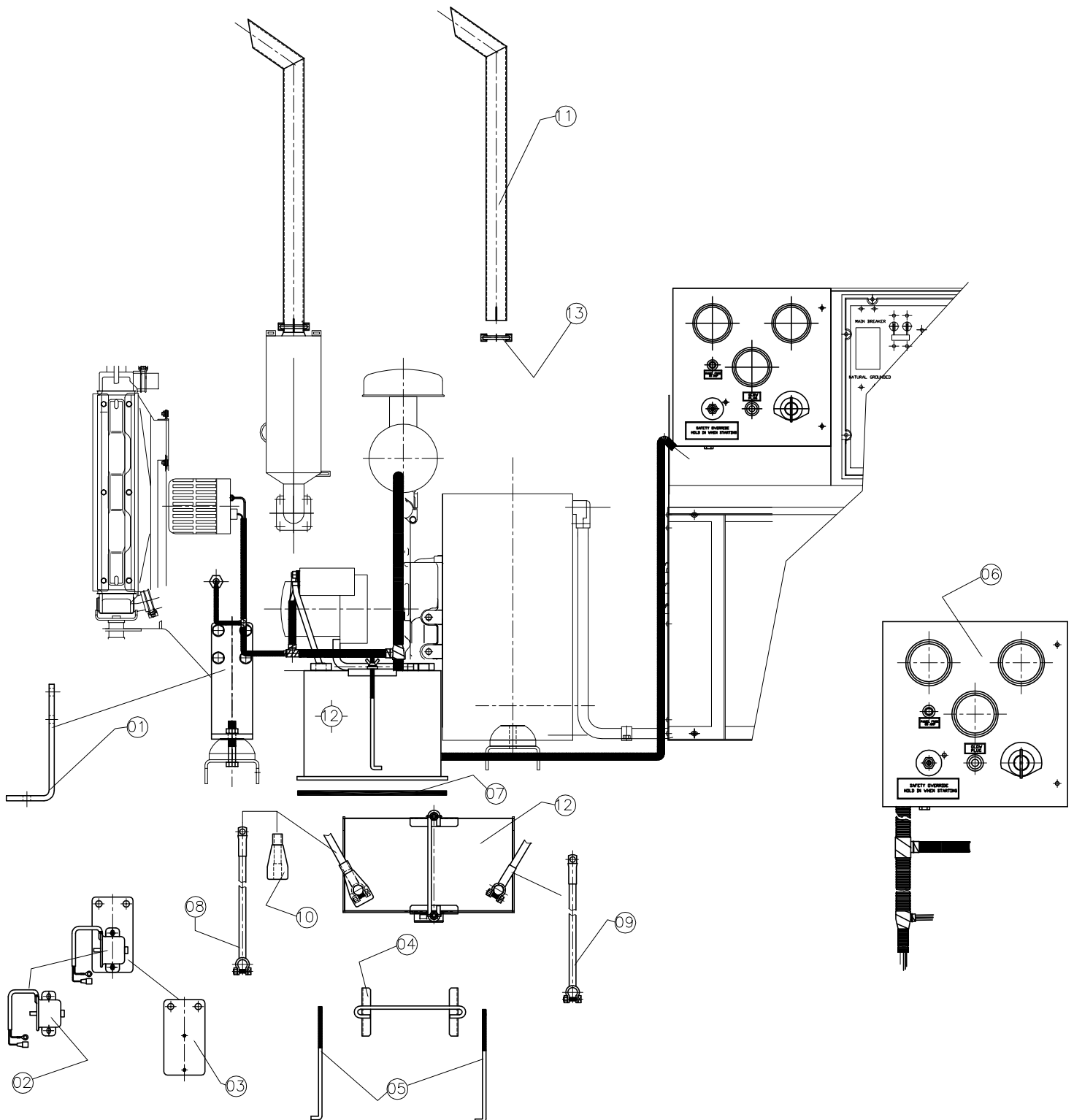
MK. NO.	PART NO.	DESCRIPTION
01	G5–10–01	G– PLASTIC TANK 30 GAL.&CAP
02	G5–10–01–01	FUEL TANK(PLASTIC)
03	G5–10–01–02	CAP
04	G5–10–02	PICK UP TUBE(ASSEMBLY)
05	G5–10–03	RETURN TUBE(ASSEMBLY)
06	G5–10–04	HOLD DOWN STRAPS
07	PT8–75–01	LAMACOID ” USE DIESEL FUEL ONLY”
08	PT5–10–22	FILTER,FUEL
09	G5–10–08	FILTER FUEL KIT
10	PT5–75–14	BUSHING
11	PT5–75–31	COUPLER HOSE (BARB) TO MALE PIPE
12		ø5/16” FUEL LINE
13		ø3/16” FUEL LINE
14		HOSE CLAMP MH–6
15		HOSE CLAMP MH–4
16		STANDARD–DUTY CABLE TIES



MK. NO.	PART NO.	DESCRIPTION
01	G6-10-01	FRONT(PAINTED)
02	G6-10-02	BACK (PAINTED)
03	G6-10-03	REAR SUB FRAME(PAINTED)
04	G6-10-04	ROOF(PAINTED)
05	G6-10-05	RIGHT SIDE(PAINTED)
06	G6-10-06	LEFT SIDE (PAINTED)
07	G6-10-07	REAR-RIGHT CORNER@FRONT-LEFT CORNER
08	G6-10-08	REAR-LEFT CORNER@FRONT-RIGHT CORNER
09	G6-10-09	DOOR(PAINTED)
10	G6-10-10	S.S. HINGE
13	G6-90	LIGHT PACKAGE
14	G6-10-14	DOOR BUMPER
15	G6-10-15	BALL STUD-13mm-GAS SHOCK
16	G6-10-16	BALL END FITTING 13mm GAS SHOCK
17	G6-10-17	GAS SPRING
18	PT6-10-73	DOOR LATCH (BLACK)
19	G6-10-19	COOLANT RESERVOIR
20		ø1/2" GR.5 BOLT X 1 1/4"
21		ø1/2" GR.5 LOCK WASHER
22		ø3/8" GR.5 NUT
23		ø3/8" GR.5 LOCK WASHER
24		ø3/8" GR.5 FLAT WASHER
25		ø1/4" GR.5 CARRIAGE BOLT x3/4"
26		ø1/4" GR.5 LOCK WASHER
27		ø1/4" GR.5 FLAT WASHER
28		ø1/4" GR.5 NUT
29		ø1/4" GR.5 BOLT x3/4"
30		ø1/4" NYLON LOCK NUT
31		ø3/16" X 3/8" SS POP RIVET LT
32		DOT REFLECTIVE TAPE(1 1/2" X 29 1/2")
33		1/2" RED PINSTRIPE
34	PT6-10-49	DECAL (8 KW)
35	PT6-10-43	Label,"WARNING"
36	PT6-10-42	Label,"CAUTION"
37	G6-10-90	DECAL -GENESIS POWER LIGHT
38	PT6-10-40	DECAL -IMPORTANT READ DIRECTION
39	G6-10-99	DOT SERIAL PLATE-GENESIS
40	G6-10-92	DECAL -FRONTIER POWER PRODUCTS

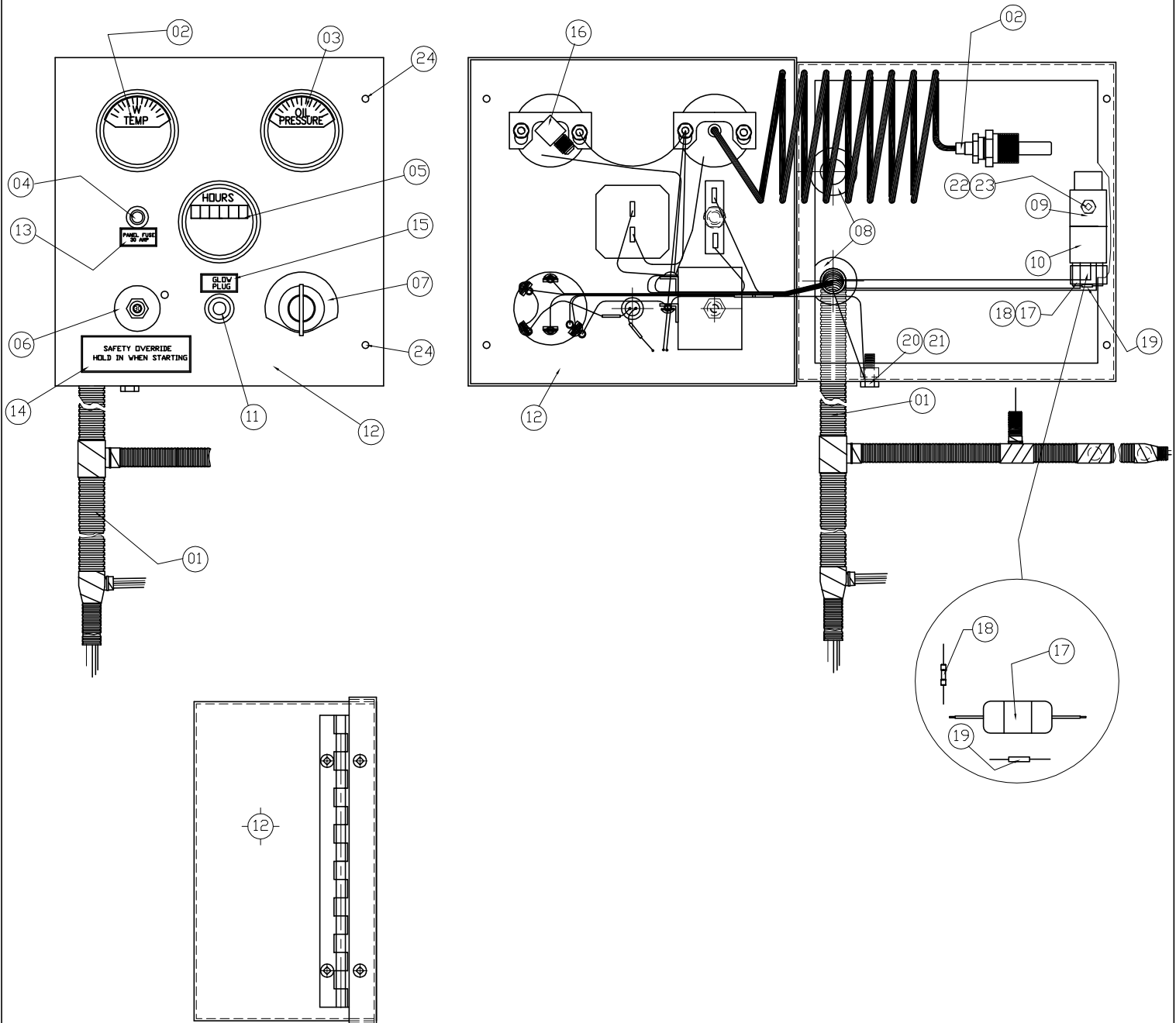


MK. NO.	PART NO.	DESCRIPTION
01	G6-90	LIGHT PACKAGE
02	G6-90-01	7 POLE PLUG & CABLE
03	PT6-90-01-01	7 POLE PLUG
04	G6-90-01-02	16GA. 6WIRE
05	PT6-90-01-04	4 POLE PLUG FEMALE
06	G6-90-02	MAIN WIRING
07	PT6-90-02-05	2 WIRE PIGTAIL-KIT-I143-18K
08	G6-90-02-07	TRAILER HARNESS 2 POLE
09	PT6-90-04	AMBER, 2 1/2" ROUND
10	PT6-90-06	2.5 GROMMET
11	PT6-90-05	RED, 2 1/2" ROUND
12	PT6-90-07	LICENCE LIGHT WITH BRACKET(ASSEMBLY)
13	PT6-90-07-01	LICENCE LIGHT WITH BRACKET
14	G6-90-07-02	TRAILER HARNESS 2 POLE
15	PT6-90-08	OVAL LAMP
16	PT6-90-01-04	4 POLE PLUG MALE
17		3/16" SHRINK TUBE X 1 1/8"
18		ADHESIVE BACKET CABLE TIE MOUNTS
19		STANDARD-DUTY CABLE TIES

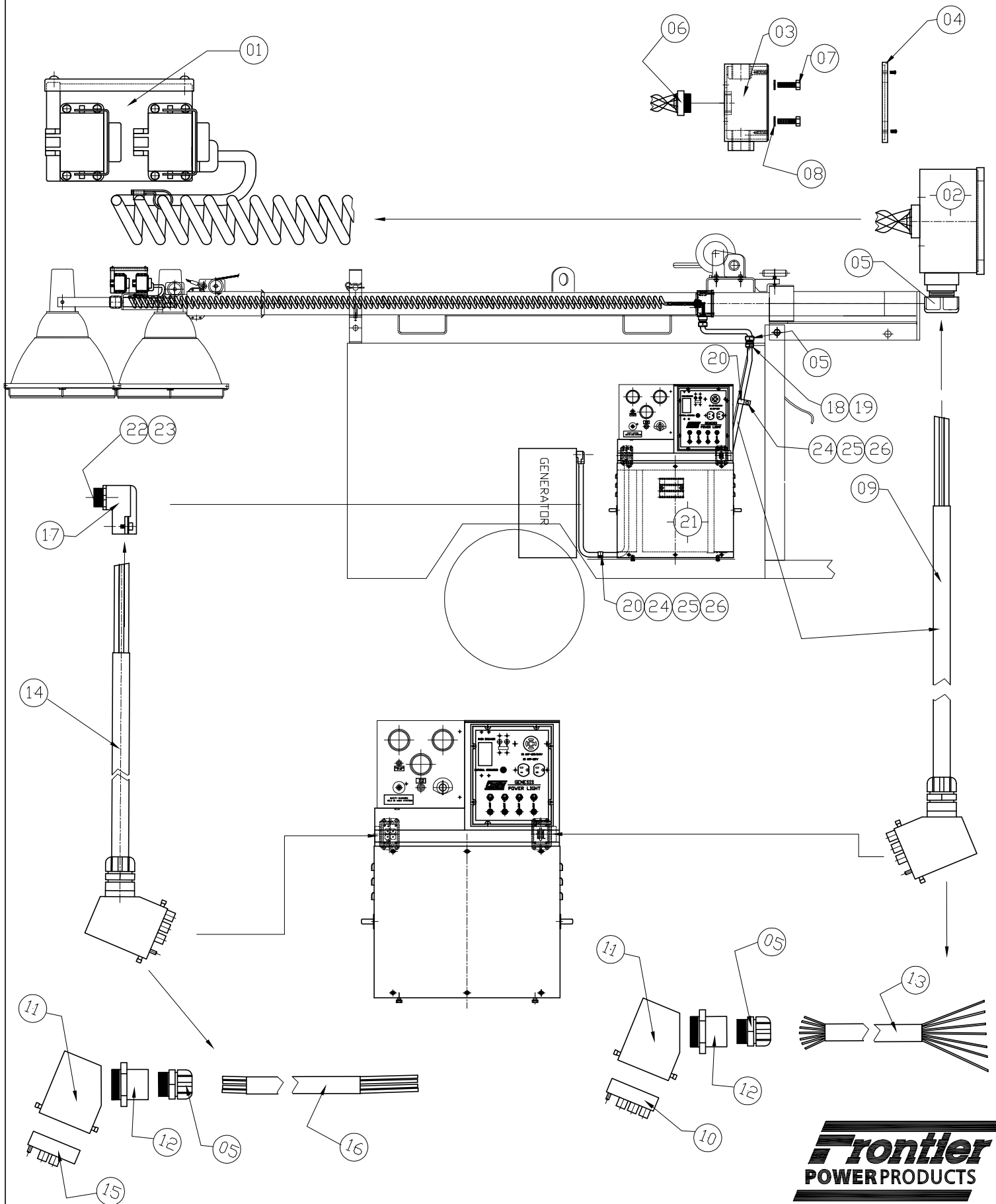


FOR ORDER PARTS SPECIFY ENGINE
ALL OTHER ENGINE PARTS REFER TO MANUFACTURER PARTS MANUAL

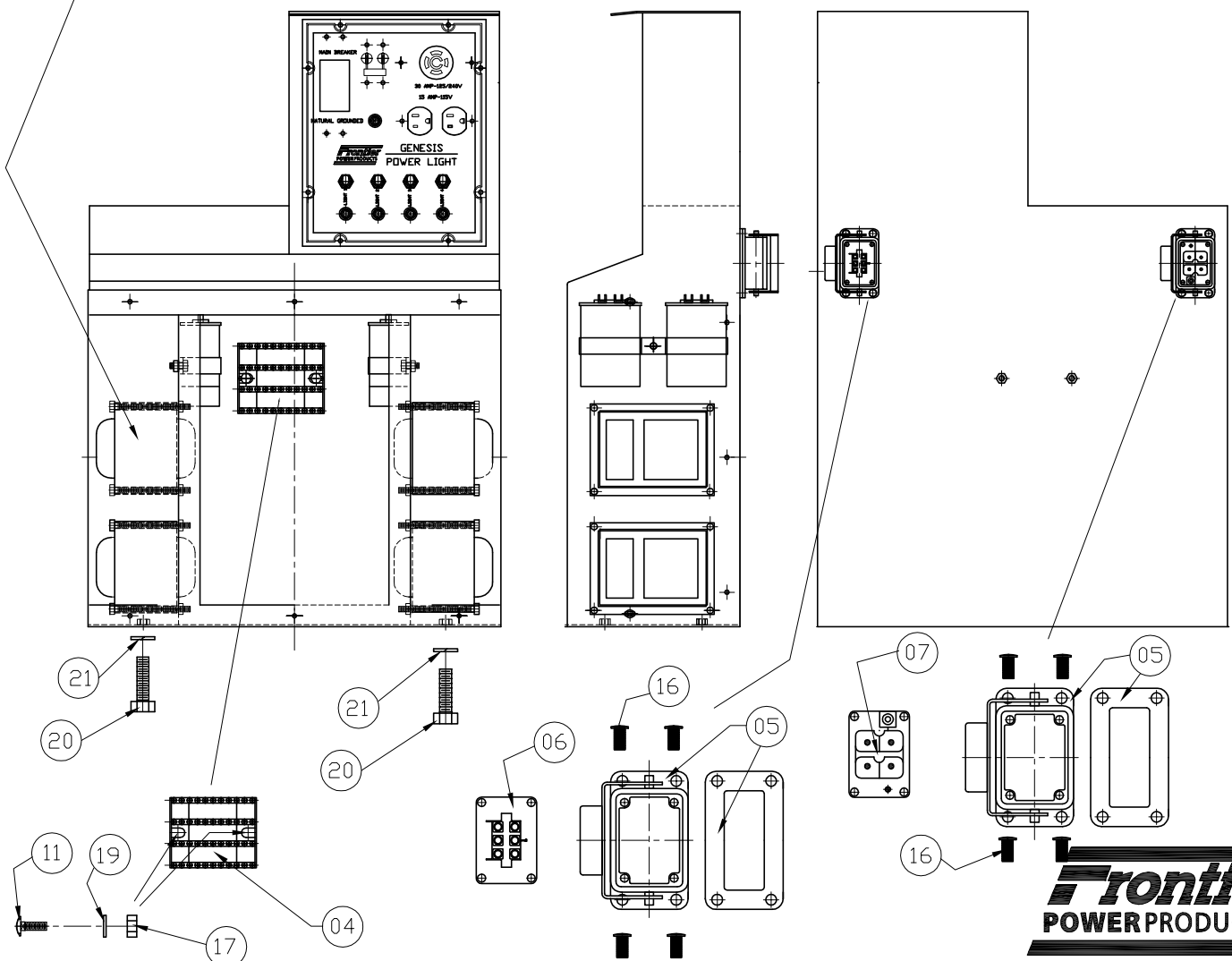
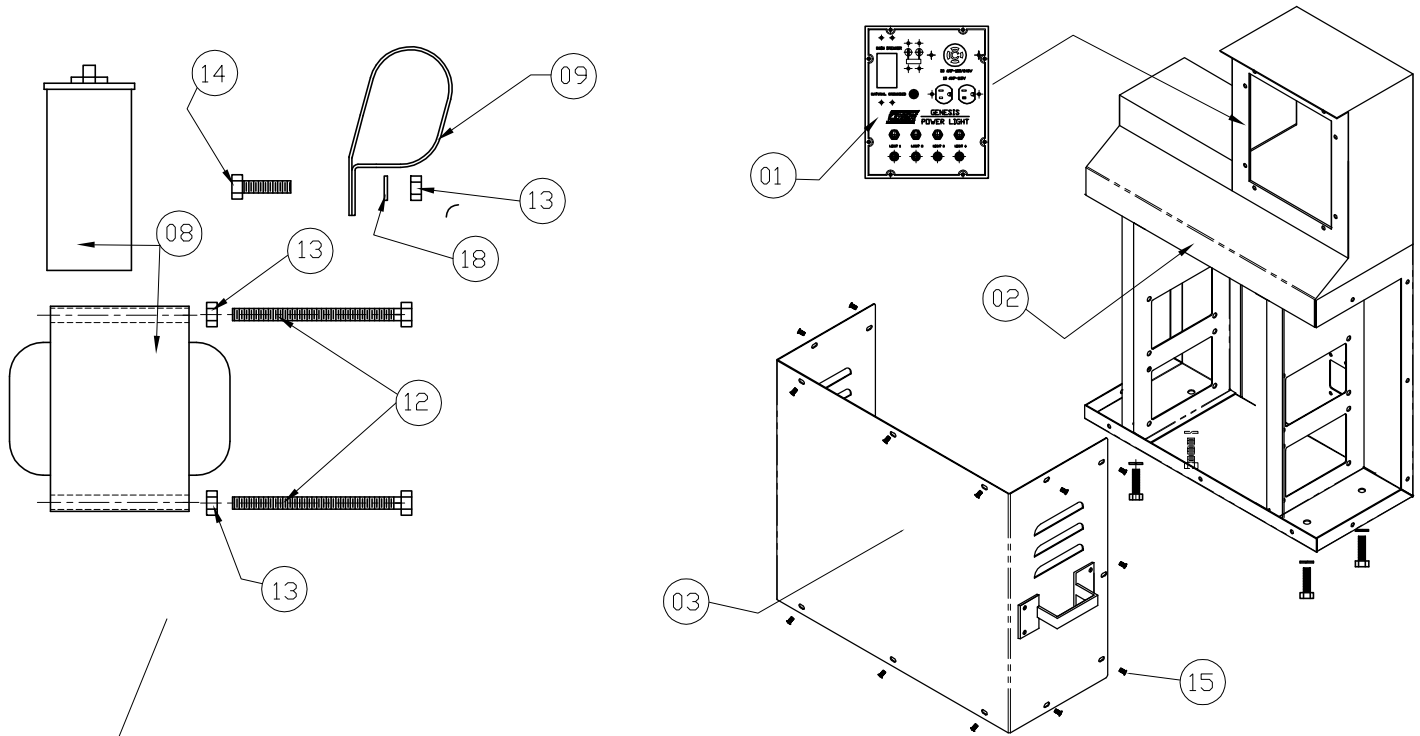
MK. NO.	PART NO.	DESCRIPTION
01	G7-10-01	ENGINE MOUNT(PAINTED)
02	PT7-40	FUEL PUMP
03	G7-40-01	MOUNT FOR FUEL PUMP(PAINTED)
04	G4-31	HOLD DOWN-BATTERY
05	G4-32	BATTERY HOLD DOWN 8"
06	G7-81	START PANEL
07	G4-01-65	BATTERY PAD
08	G7-10-25	RED BATTERY CABLE
09	G7-10-26	BLACK BATTERY CABLE
10	PT7-10-27	POS.BATT.CABLE COVER
11	G7-10-85	EXHAUST EXTENSION
12	G4-01-62	BATTERY
13	PT8-95-121	EXHAUST CLAMP



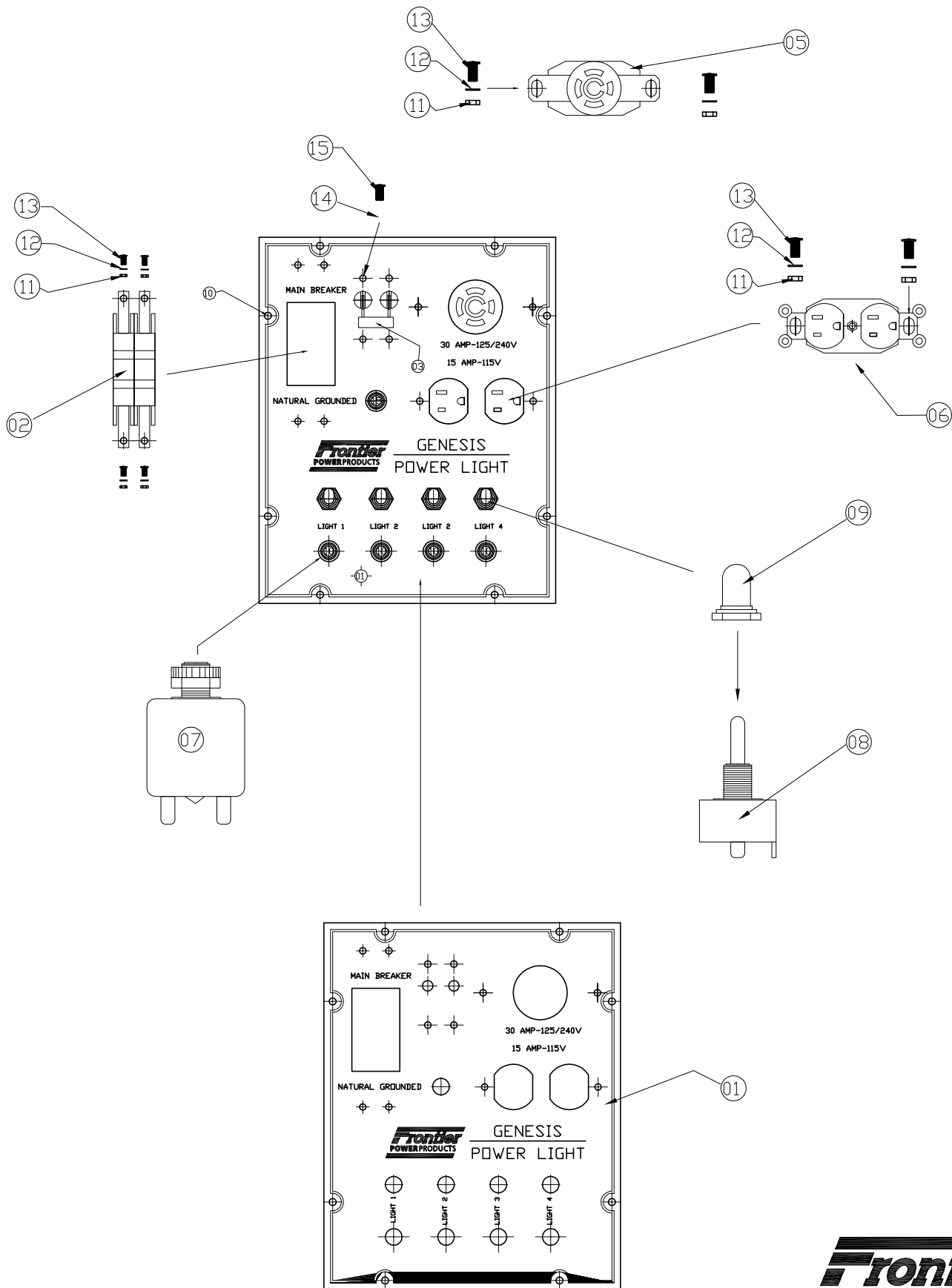
MK. NO.	PART NO.	DESCRIPTION
01	G7-81-01	SPLIT LOOM
02	PT7-80-02	GAUGE,WATER TEMP, 8ft.
03	PT7-80-03	GAUGE, OIL 100PSI NO BYPASS
04	PT8-95-18	BREAKER 30AMP
05	PT7-80-05	HOURLMETER
06	PT7-80-06	SWITCH TATTLETALE 12V
07	PT7-80-07	SWITCH IGN Z602,D902 E02
08	PT7-80-08	GROMMET,RUBBER
09	PT7-80-09	RELAY,NO MNT.- 12V40Amp
10	PT7-80-10	RELAY BASE
11	PT7-80-11	LAMP INDICATOR 12V
12	PT7-80-12	ENG, ENCL. GAUGE PANEL IVORY
13	PT8-75-11	LAMACOID" PANEL FUSE 30 AMP"
14	PT8-75-12	LAMACOID "SAFETY OVERRIDE"
15	PT8-75-13	LAMACOID "GLOW PLUG"
16	PT7-80-16	EXTERNAL FLARE ELBOW
17	PT7-81-06	CAPACITOR,START PANEL
18	PT7-81-07	RESISTOR,START PANEL(5% +/-)
19	PT7-81-08	DIODE
20		ø1/4" GR.5 BOLT X 3/4"
21		ø1/4" GR.5 LOCK NUT
22		8/32 SCREW 1/2"
23		8/32 LOCK NUT
24		WOOD-METAL SCREW *10-3/4"



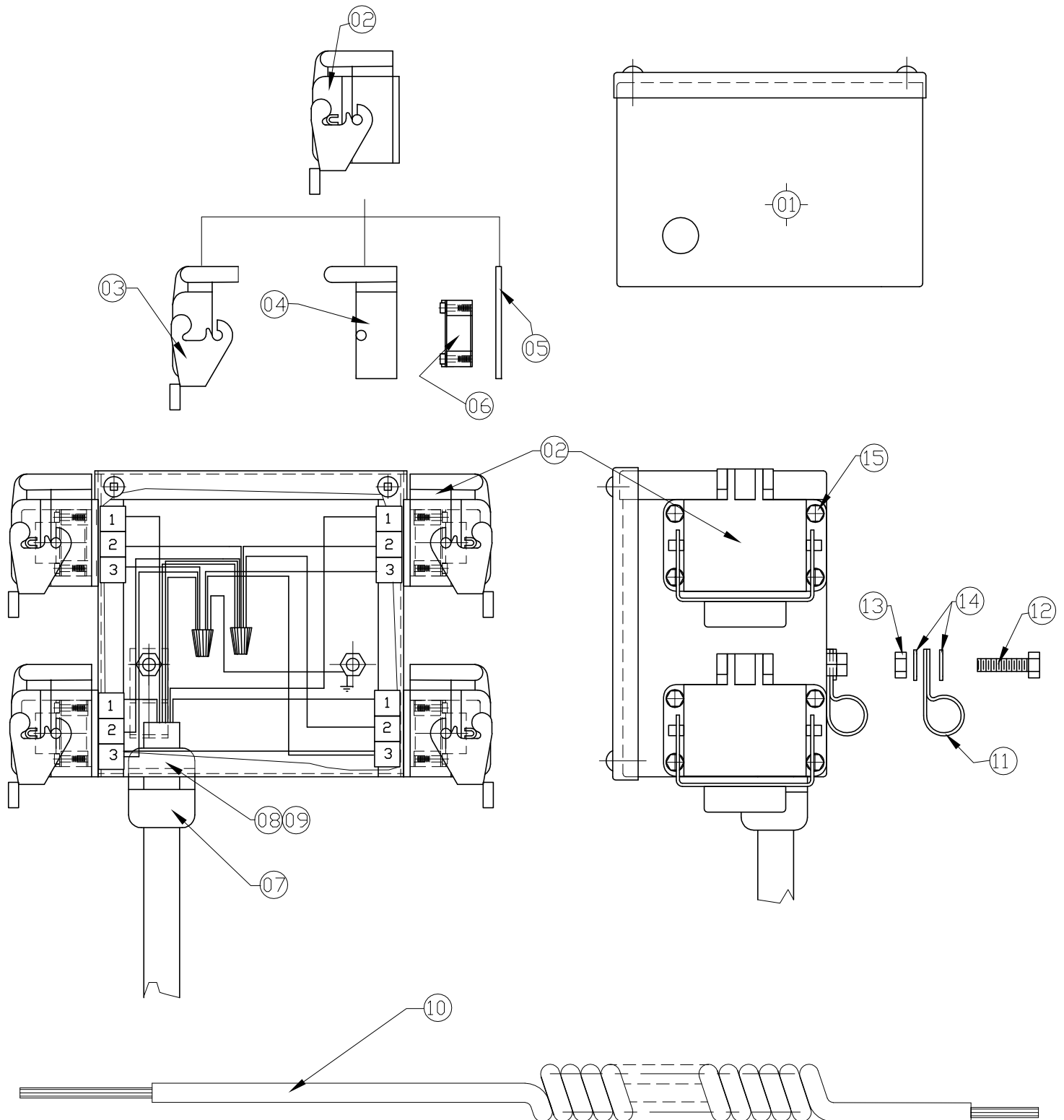
MK. NO.	PART NO.	DESCRIPTION
01	PT8-50	MAST BOX ASSEMBLY
02	PT8-60	JUNCTION BOX(ASSEMBLY)
03	PT8-60-01	BOX FSU 3/4"
04	PT8-60-02	WEATHERPROOF COVER
05	PT8-95-31	CONNECTOR
06	PT8-60-04	STRAIN RELIEF GRIPS
07		ø1/4" GR.5 BOLT X 3/4"
08		ø1/4" GR.5 LOCK WASHER
09	G8-75	LIGHT CABLE FOR GENESIS(ASSEMBLY)
10	PT8-95-10	INSERT MALE
11	G8-70-03	HOOD LARGE-ANGLE EXIT
12	PT8-95-39	CONNECTOR/ADAPTER METRIC-IMP
13	G8-75-01	LIGHT CABLE FOR GENESIS
14	G8-70	GEN. CABLE FOR GENESIS(ASSEMBLY)
15	PT8-95-09	INSERT FEMALE 4 PIN 65AMP
16	G8-70-01	GEN. CABLE FOR GENESIS
17	PT8-95-39	CABLE CONNECTOR 90° 1/2"
18	PT8-95-45	PLASTIC BUSHING 3/4"
19	PT8-95-55	LOCK NUT 3/4"
20	PT8-95-104	CLAMP,SUPPORT.75"ID
21	G8-10	DIST. BOX ASSEMBLY
22	PT8-95-59	1/2" LOCK NUT
23	PT8-95-49	1/2" PLASTIC BUSHING
24		ø1/4" GR.5 BOLT X 1"
25		ø1/4" GR.5 LOCK NUT
26		ø1/4" GR.5 FLAT WASHER



MK. NO.	PART NO.	DESCRIPTION
01	G8-10-01	DISTRIBUTION PLATE-ASSEMBLY
02	G8-10-02	DISTRIBUTION BOX(PAINTED)
03	G8-10-03	DISTRIBUTION BOX COVER(PAINTED)
04	G8-10-04	TERMINAL BLOCK 80 AMP
05	G8-10-05	HOUSING BLKHD-NO COVER
06	PT8-95-11	INSERT FEMALE
07	PT8-95-08	INSERT MALE 4 PIN 65AMP
08	PT8-10-20-02	BALLAST 1000W METAL HALIDE TRI
09	PT8-95-114	2.25" ID SUPPORT CLAMP
11		ø8/32" GR.5 CARRIAGE BOLT X 1/2"
12		ø1/4" GR.5 BOLT X 3 1/2"
13		ø1/4" GR.5 NYLON LOCK NUT
14		ø1/4" GR.5 BOLT X 1"
15		ø8/32" SCREW X 1/2"
16		ø8/32" SCREW X 3/4"
17		ø8/32" NYLON LOCK NUT
18		ø1/4" GR.5 FLAT WASHER
19		ø8/32" GR.5 FLAT WASHER
20		ø5/16" GR.5 BOLT X 1"
21		ø5/16" GR.5 LOCK WASHER
22		ø3/16" S.S POP RIVETS



MK. NO.	PART NO.	DESCRIPTION
01	G8-10-01-03	DISTRIBUTION PLATE(PAINTED&DEC.)
02	PT8-95-26	BREAKER 2P/40AMP
03	PT8-95-29	2 POLE BREAKER FACE MOUNT
04	PT8-95-20	BREAKER 15A
05	PT8-95-02	REC. 3P4W 30A 125/250V TL
06	PT8-95-01	RECEPTACE 15A 125V
07	PT8-95-19	BREAKER 10A
08	PT8-95-27	SWITCH ON/OFF 15A 125V 2P
09	PT8-95-28	WEATHER BOOT FOR 30-050 SWITCH
11		NYLON LOCK NUT 8/32
12		FLAT WASHER 8/32
13		SCREW CMSR 8/32 X 1/2
14		LOCK NUT 6/32
15		SCREW CMSR 6/32 X 1/2



MK. NO.	PART NO.	DESCRIPTION
01	PT8-50-01	ENCLOSURE
02	PT8-50-02	HOUSING BULKHEAD
03	PT8-50-02-01	COVER
04	PT8-50-02-02	BODY
05	PT8-50-02-03	RUBBER
06	PT8-95-11	INSERT FEMALE
07	PT8-95-31	CONNECTOR, T&B , 0.750 X 3/4" NPT
08	PT8-95-45	3/4" PLASTIC BUSHING
09	PT8-95-55	3/4" LOCK NUT
10	PT8-50-10	5' CURLY CORD
11	PT8-95-104	.75" ID CLAMP
12		ø1/4" GR.5 BOLT X 1"
13		ø1/4" GR.5 LOCK NUT
14		ø1/4" GR.5 FLAT WASHER
15		SELF TAPPING SCREW