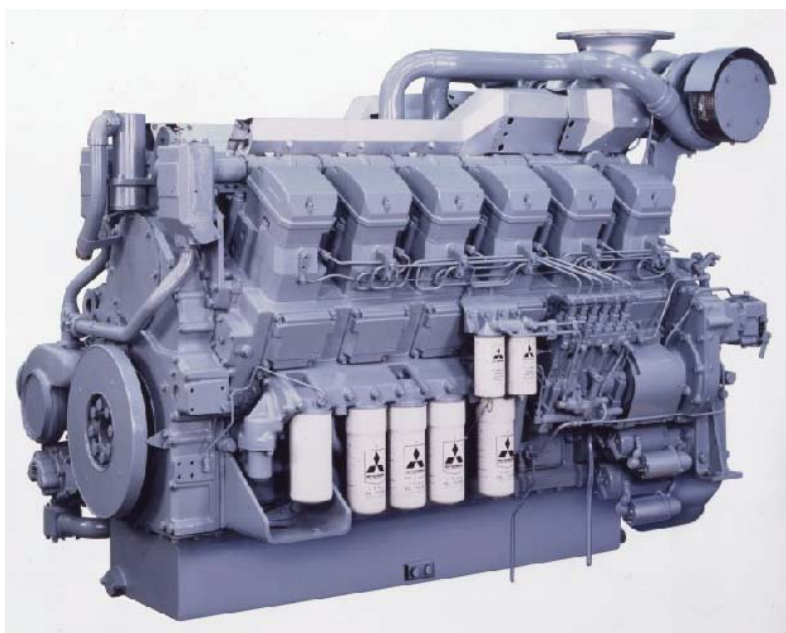


# S12R-Y3MPTAW

Reliable, Mechanical and EPA Tier 3 Certified



The S12R-Y3MPTAW engine is designed for durability, reliability and built in Japan.

Mitsubishi has put together the ideal features for its new engine. Its reliable, fully mechanical and EPA Tier 3 certified.

We didn't need to use complex electronics. We just used smart engineering to build a simple, powerful and easy-to-maintain engine.

This is the perfect engine for your Tugboat, Offshore and Cargo Vessel.

***What else could you want for the long haul?***



**Diesel-Electric Propulsion:**  
**2x Mitsubishi S12R**

*Information is subject to change without notice*

**Mitsubishi Engine North America, Inc.**

1250 Greenbriar Drive, Suite E, Addison, IL 60101

Telephone: +1 (630) 268-0750 Fax: +1 (630) 268-9293

# S12R-Y3MPTAW

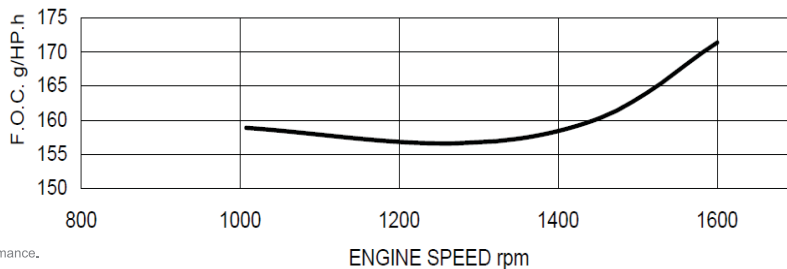
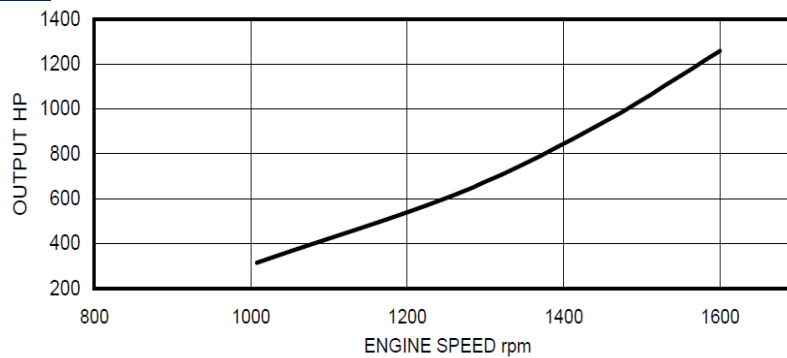
**12-cylinder, 4-cycle, Water-cooled, Diesel Engine  
Direct-injection, Turbocharged with Air-Cooler**

Rating: 1260hp@1600rpm

Bore / Stroke: 6.69in / 7.08in (170mm / 180mm)

Displacement: 2,992 cu in (49.03L)

## Output:



The F.O.C. data is test bench data and not a guaranteed performance.  
Data is subject to change without notice.

## Engine Dimensions:

Length		Width		Height		Weight (Dry)	
mm	in	mm	in	mm	in	lb	kg
2,946	116	1,524	116	2,032	80	11,731	5,320

*Information is subject to change without notice  
Dimensions and Weight may vary based on selected engine configuration.*

## Mitsubishi Engine North America, Inc.

1250 Greenbriar Drive, Suite E, Addison, IL 60101

Telephone: +1 (630) 268-0750 Fax: +1 (630) 268-9293