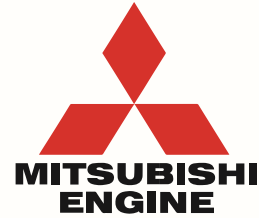
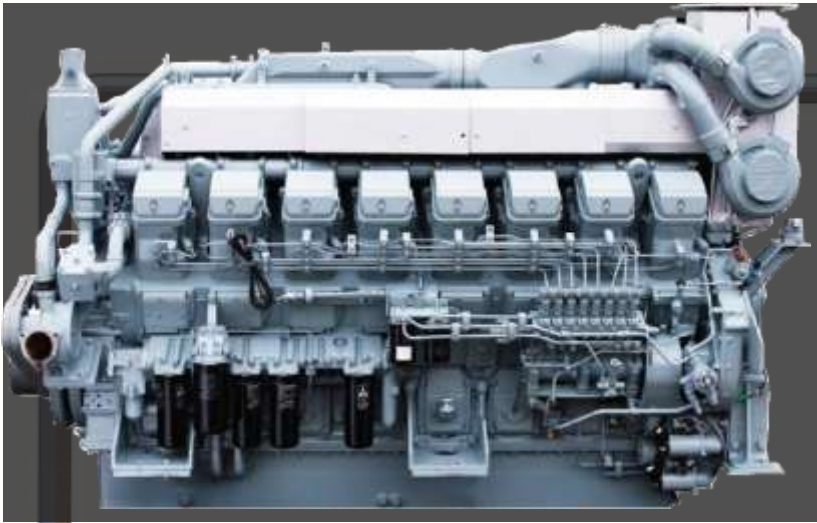


# S16R-Y3MPTAW



## SR SERIES

The S16R-Y3MPTAW engine is designed for durability and reliability.

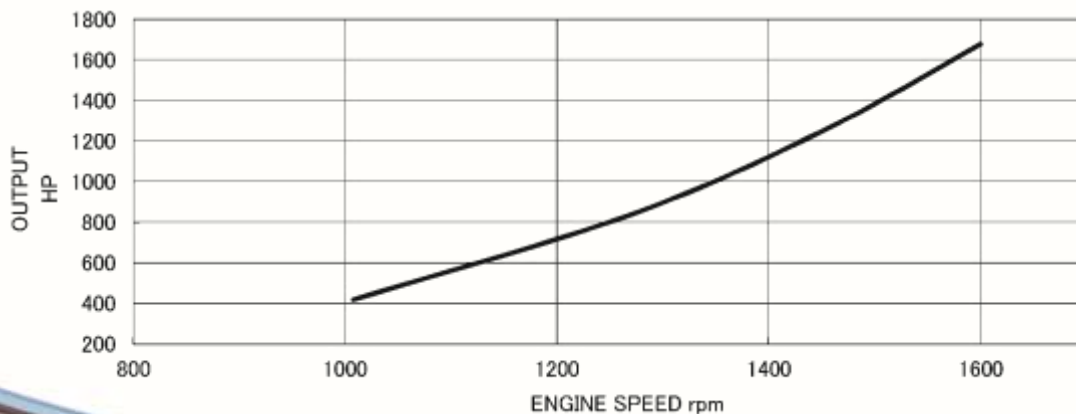
Mitsubishi has put together the ideal features for its new engine. It is reliable, fully mechanical and EPA Tier 3 certified.

We didn't need to use complex electronics. We just used smart engineering to build a simple, powerful and easy-to-maintain engine.

This is the perfect engine for your Tugboat, Offshore and Cargo Vessel.

### Specifications

Output	1675 hp @ 1600 rpm
Bore/Stroke	6.69in x 7.09in (170mm x 180mm)
Displacement:	65.37L (3,989 cu. in.)
Dimensions:	115.9 in (2,931 mm) Length 59.88 in (1,512 mm) Width 77.17 in (1,960 mm) Height
Weight (Dry):	14,950 lbs (6,780 kg)



*Information is subject to change without notice.*

## Mitsubishi Engines



	Engine	Output	Bore/Stroke	Displacement	Weight (Dry)	EPA Tier
	S6B3-Y2MPTK	429 hp @ 2000 rpm	5.31in x 6.69in (135mm x 170mm)	14.6 L (891 cu. in.)	2,889 lbs (1,310kg)	Tier 2
	S6A3-Y3MPTAW	543 hp @ 1840 rpm	5.91in x 6.89in (150mm x 175mm)	18.6 L (1,133 cu. in.)	4,190 lbs (1,900 kg)	Tier 3
	S6R-Y3MPTAW	630 hp @ 1600 rpm	6.69in x 7.09in (170mm x 180mm)	24.5 L (1,496 cu. in.)	6,240 lbs (2,830 kg)	Tier 3
	S6R2-Y3MPTAW	803 hp @ 1400 rpm	6.69in x 8.669in (170mm x 220mm)	29.96 L (1,828 cu. in.)	6,395 lbs (2,900 kg)	Tier 3
	S12R-Y3MPTAW-1100	1100 hp @ 1600 rpm	6.69in x 7.09in (170mm x 180mm)	49 L (2,992 cu. in.)	11,731 lbs (5,320 kg)	Tier 3
	S12R-Y3MPTAW	1260 hp @ 1600 rpm	6.69in x 7.09in (170mm x 180mm)	49 L (2,992 cu. in.)	11,731 lbs (5,320 kg)	Tier 3
	S16R-Y3MPTAW	1675 hp @ 1600 rpm	6.69in x 7.09in (170mm x 180mm)	65.4 L (3,989 cu. in.)	14,950 lbs (6,780 kg)	Tier 3

