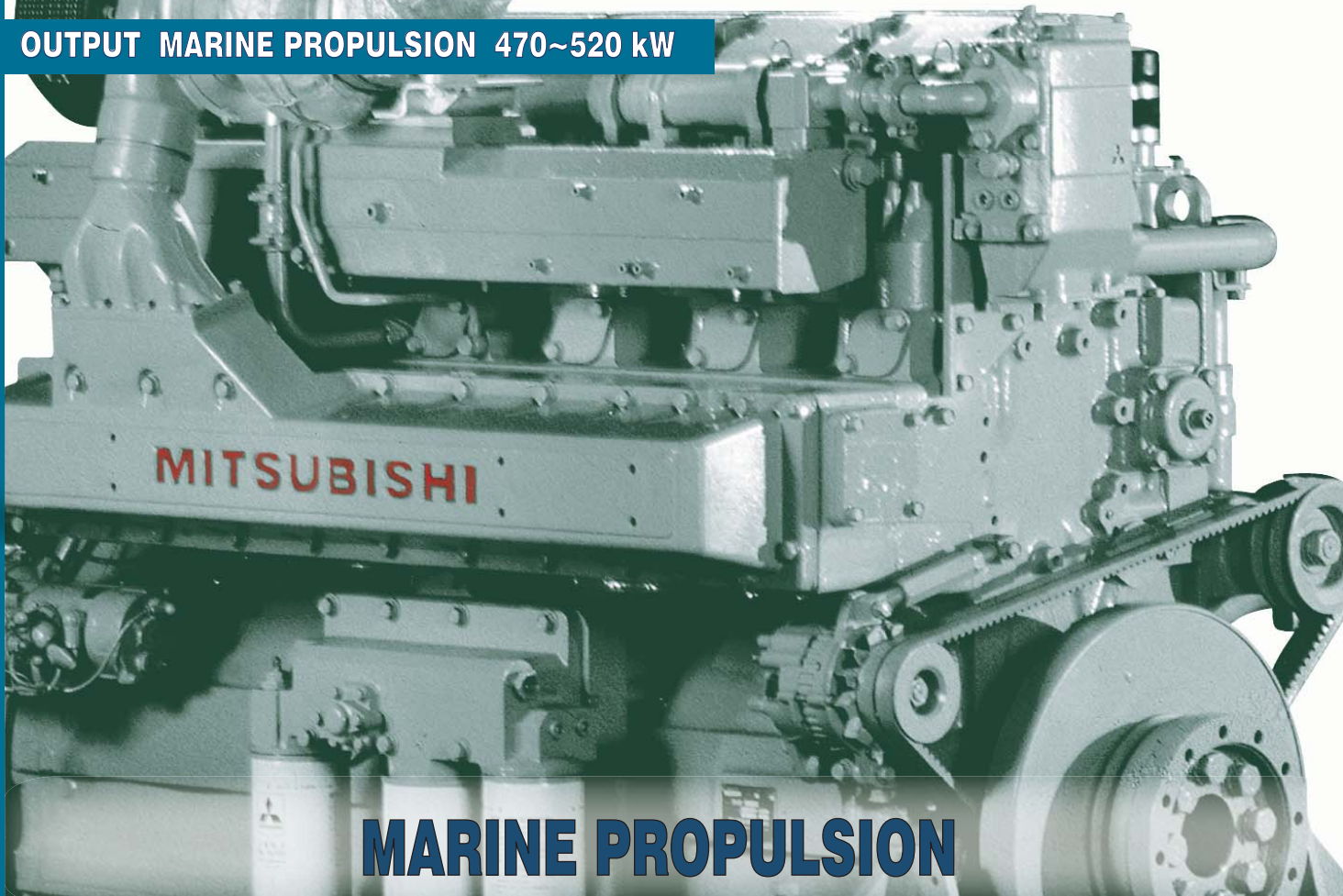


MITSUBISHI MARINE

# S6R

OUTPUT MARINE PROPULSION 470~520 kW



## MARINE PROPULSION

### ***Economic Operation***

All Mitsubishi engines are designed and built to deliver performance, dependability and fuel efficiency. From the combustion chamber design to the fuel injection technology, to the turbocharger and the advanced cooling system...everything has been perfectly balanced to provide highly reliable operation and optimum fuel consumption across the entire power curve.

### ***Easy Maintenance***

With Mitsubishi's S6R marine engine, maintenance is very easy. Each cylinder has its own cylinder head and the engine has large inspection covers on the crankcase and oil pan. No auxiliary component requires separate lubrication, whether it's the fuel injection pump, the governor, the water pump or the turbocharger.

### ***Approved by All Major Classification Societies***

At our ISO certified manufacturing facilities, every Mitsubishi S6R diesel engine is built to meet the highest quality standards, as recognized by Lloyd's Register of Shipping and other major international marine classification societies.

### ***Environmental Compatibility***

Mitsubishi offers a full line-up of engines that comply with IMO and EPA emissions standards.

### ***Local Support Around The Globe***

A team of support specialists is available worldwide to ensure that service and maintenance are performed without delay.

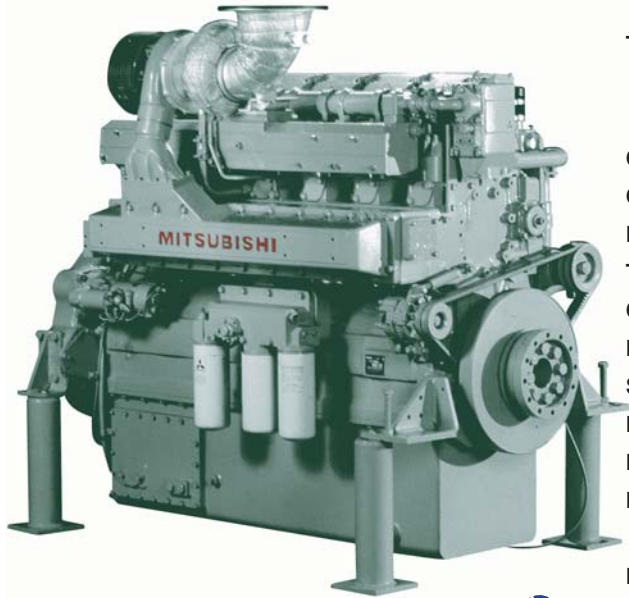
**MITSUBISHI ENGINE NORTH AMERICA, INC.**  
**1250 GREENBRIAR DRIVE, SUITE E, ADDISON, IL 60101**  
**P: 630.268.0750 F: 630.268.9293 [www.mitsubishi-engine.com](http://www.mitsubishi-engine.com)**



# MITSUBISHI MARINE

## S6R

## -Y2MPTK



### Type

4-cycle, watercooled, turbocharged diesel engine  
Y2MPTK with intercooler, cooled by (fresh) water of max 32°C

### Combustion System

Direct Injection

### Configuration

In-Line, 6-Cylinder

### Bore x Stroke - inches (mm)

6.69 (170) x 7.09 (180)

### Total Displacement - in<sup>3</sup> (ltr)

1,496 (24.51)

### Compression Ratio

14 : 1

### Rotation

SAE Standard (Counter-Clockwise Viewed from Flywheel End)

### Starting System

Electric Motor, 24 Volt - 7.5kW

### Flywheel

SAE 18

### Flywheel Housing

SAE #0

### Fuel Oil

ASTM D975, No. 1-D, No. 2-D

### Dry Weight - lbs (kg)

6240 (2830)

**EPA CERTIFIED**

### Output Marine Propulsion



Heavy Duty

Medium Duty

### HP (kWm) @ RPM

630 (470) @ 1600

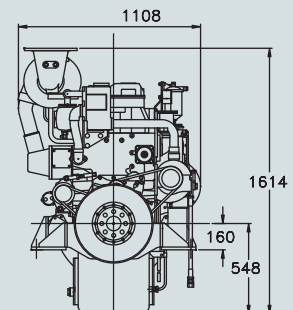
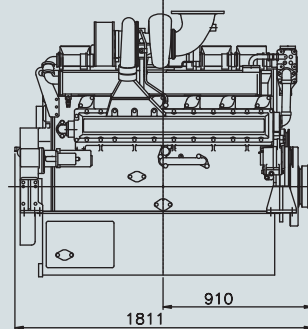
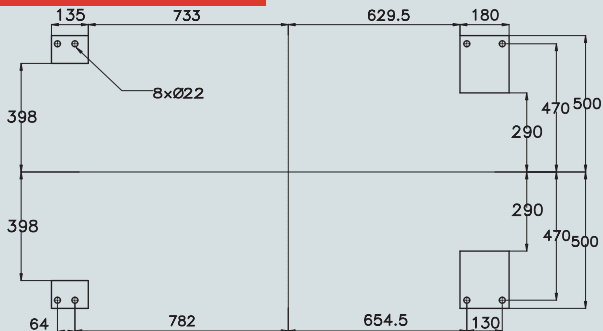
697 (520) @ 1650

Photos may show optional equipment

## Outside Dimensions

Dimensions in millimeters (1 inch = 25.4mm)

General Dimensions for reference only, not to be used for installation. See specific model drawings for further details.



## Standard Engine Equipment

### Fuel System

Flexible fuel supply and return hoses, fuel feed pumps, fuel filters, fuel injection pumps, fuel injectors, overflow valve

### Lubricating Oil System

Wet type oil pan with inspection covers, oil pressure pump, full-flow lubricating oil filters, by-pass filter, oil cooler with thermostat, piston cooling through oil injectors

### Cooling System

Fresh water pump, thermostats with by-pass.

### 24 Volt Electric System Earth Floated

Starter motor battery charging alternator (35 amp), energize to stop (ETS) stop solenoid

### Air Intake and Exhaust System

Mitsubishi turbocharger with vertical exhaust outlet, air inlet silencers with pre-cleaner, inlet air aftercooler or intercoolers, inlet manifolds, fresh water cooled exhaust manifold.

### General

Hydraulic Woodward PSG governor with oil supply system, mounting brackets, flywheel and housing SAE standard, torsional vibration damper, parts catalog and owners manual

Mitsubishi Engine, their respective logos as well as corporate and product identity used herein, are trademarks of Mitsubishi and may not be used without written permission.

Distributed By:



Specifications are subject to change without prior notice

MLEMB 10-09